

OMNISEC SOFTWARE: v11.00 (PSS0051-08) SOFTWARE UPDATE NOTIFICATION

Introduction

This document details the release of software PSS0051-08: v11.00 of the software for the OMNISEC system. It covers software issues fixed and new features introduced. This information is required to perform a risk analysis to determine if the software should be installed. In this risk analysis the benefits of the new features provided and resolved software issues must be weighed against the risk of new issues that may be introduced to vital areas of the software or possible changes to the results of future analysis. Installation instructions are provided.

Installation

It is assumed that you have authority to install or update software within your facility. It is also assumed that you have Administrator rights for the system upon which the software is installed, as this is a requirement of the installation process. If you do not have this authority please consult with your I.T. support department before proceeding.

Minimum System Requirements

Intel Core i7 processor, 4 GB RAM, 500 GB free hard disk space, 1600 x 900 screen resolution running in 16 bit color mode, CD-ROM drive, 1 free USB port, Windows 7 or 10 64bit Professional operating system.

Recommended System Requirements

The recommended computer system requirements for running this software are highlighted in table 1 below.

Table 1: Recommended system requirements for the OMNISEC software.

Feature	Specification
Processor Type	Intel Core i7 processor (Quad Core HT, 3.1 GHz Turbo, with HD Graphics),
Memory	8 GB RAM
Hard Disk Storage	500 GB free hard disk space,
Additional Storage Media	CD-ROM drive,
Display Resolution	1920 x 1080 full HD screen resolution running in 16 bit color mode,
Connectivity	1 free USB port,
Operating System	Windows 7 or 10 64 bit Professional operating system.

Supported operating systems

OMNISEC software v11.00 is compatible with Windows 7 or 10. Only 64 bit Professional versions are supported. Windows XP, Windows Vista, and Windows 8 are not supported.

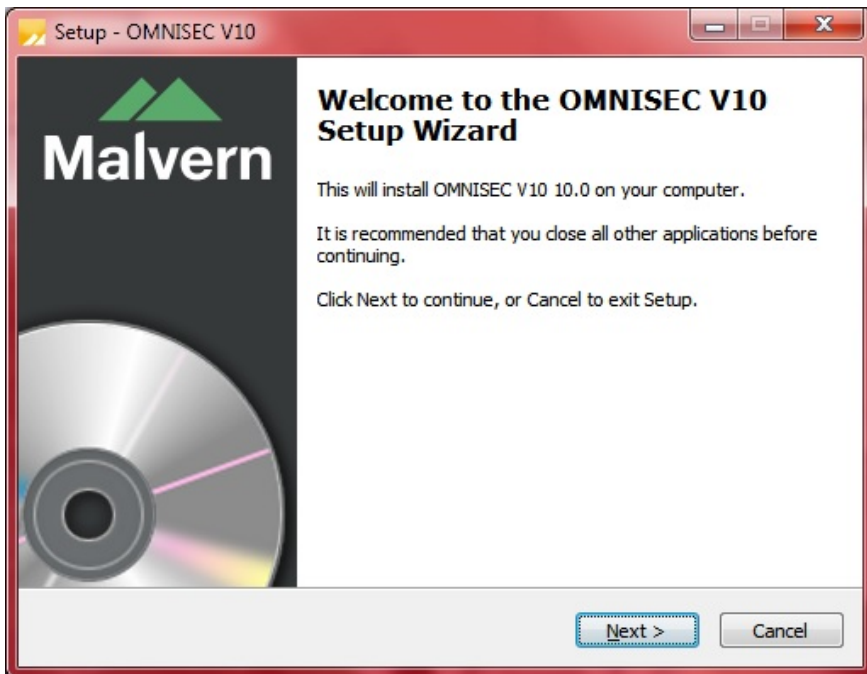
Supported Languages

English

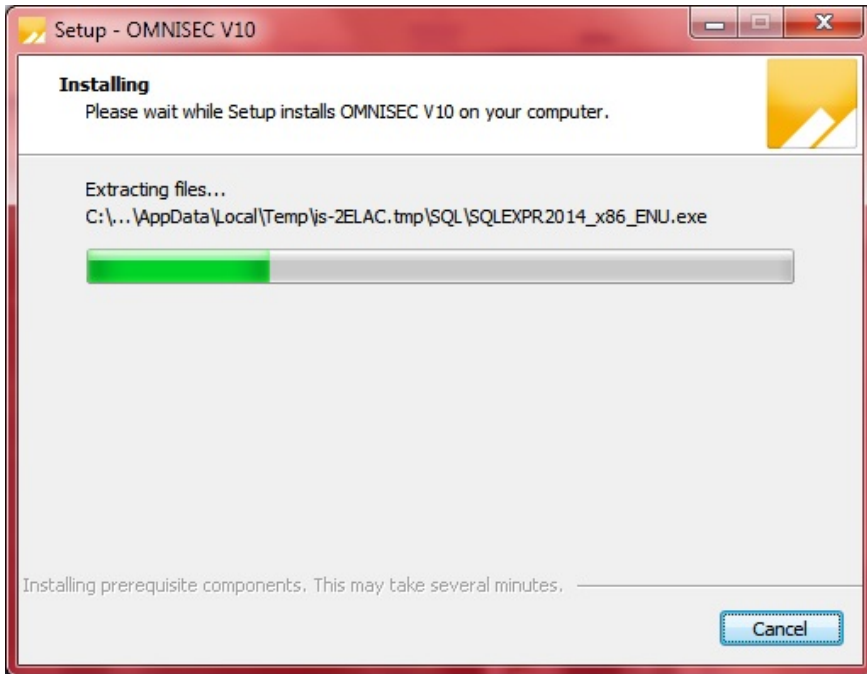
Installation Instructions

Windows 7 or 10 64 bit Professional

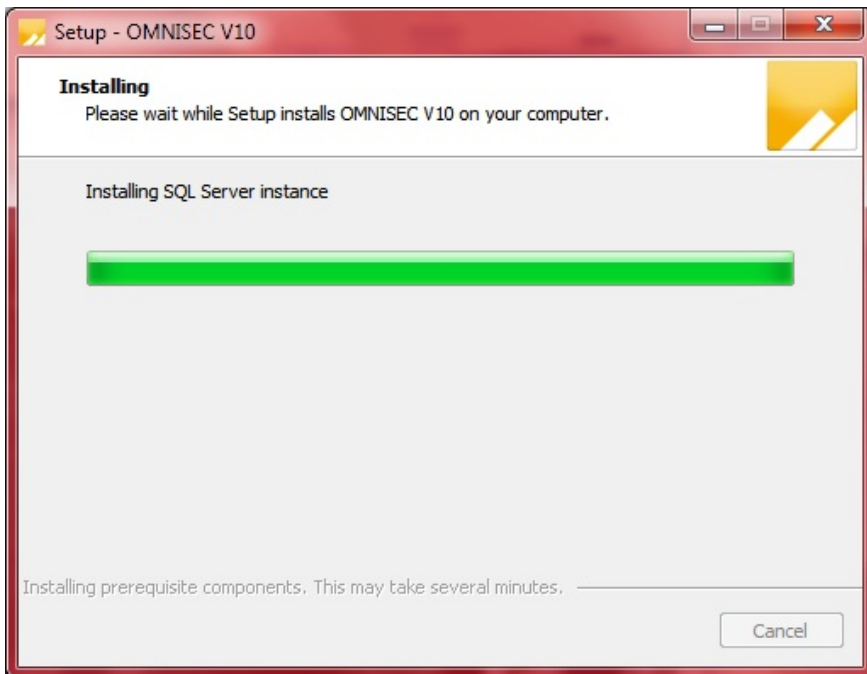
In most cases, OMNISEC should install automatically when the CD is inserted in the drive. If it doesn't, the user can double-click on the installer file, OMNISEC1100.exe, to begin the installation.



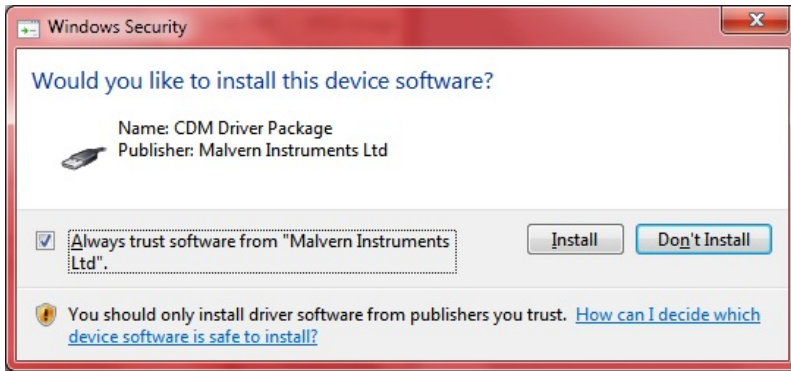
When the Setup window appears, select Next to process. You can select cancel if you would like to stop the setup and continue another time.



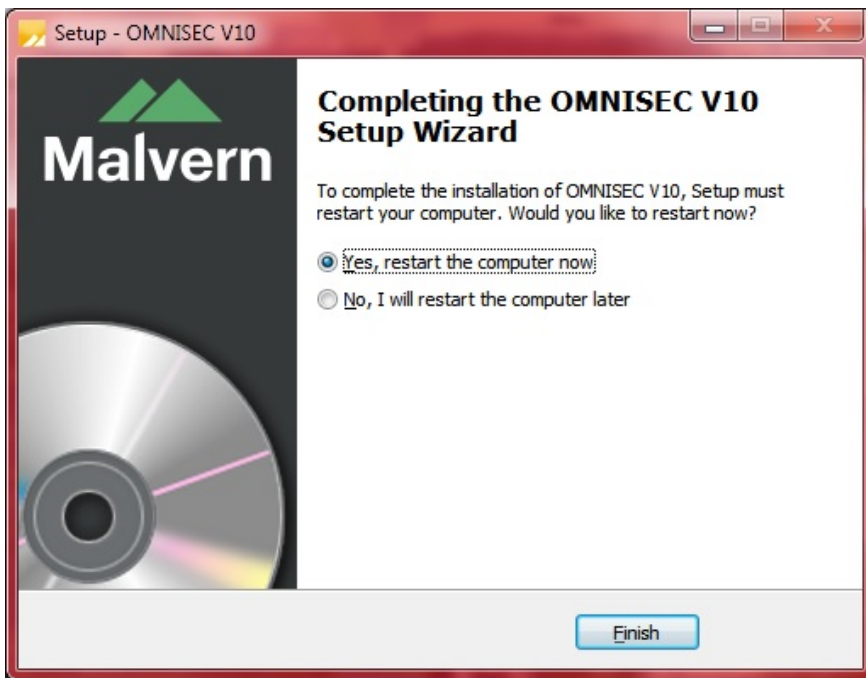
Once you have followed all of the instructions and clicked "Install", the software will begin the installation process.



If this is the first time OMNISEC v11 is being installed, it will install a 2014 SQL Server instance. This process may take 10 to 20 minutes to complete.



During the installation, a Windows Security window may appear asking if you would like to install a device. Select "Install" to install the device.



The last section in the Setup window will inform you that the computer needs to be restarted to complete the setup. Once the computer has been fully restarted, OMNISEC v11 will be ready to use.

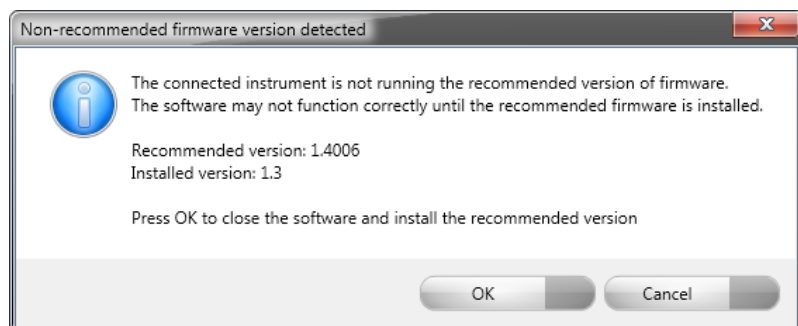
Connecting the OMNISEC to a PC

With the software installed, the instrument should be connected via the USB port, and the system switched on. If present, turn on OMNISEC RESOLVE first and wait 30 seconds for it to complete its startup. Next, turn on OMNISEC REVEAL and wait 1 minute to allow it to complete its startup and connect to OMNISEC RESOLVE. When the two instruments are connected, the light bars on both instruments should be green.

If this is the first time connecting the instrument to the PC, there will be a message that appears saying "Installing device driver software". The names used to identify the drivers will be "CMULx25", "CHROME TAU A" and "CHROME TAU B". Allow the installation to proceed and do not disconnect the instrument from the PC during this process. Once the drivers have been installed, Windows will indicate that they are ready to use.

Updating the OMNISEC REVEAL firmware

The first time you launch OMNISEC 11.00 with an OMNISEC REVEAL connected, you may be prompted to install a new version of the instrument firmware.



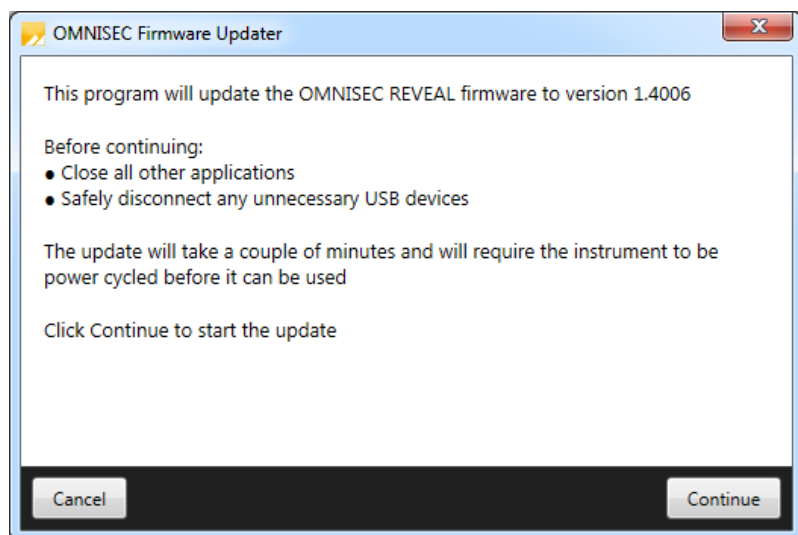
Updating the firmware improves system reliability and compatibility with the version of OMNISEC V11 you have installed on your computer. The update process takes up to 10 minutes and the instrument will need to be power cycled after the update is complete.

Click **OK** to close the OMNISEC application. After a few seconds the OMNISEC Firmware Updater program should automatically launch.

Note:

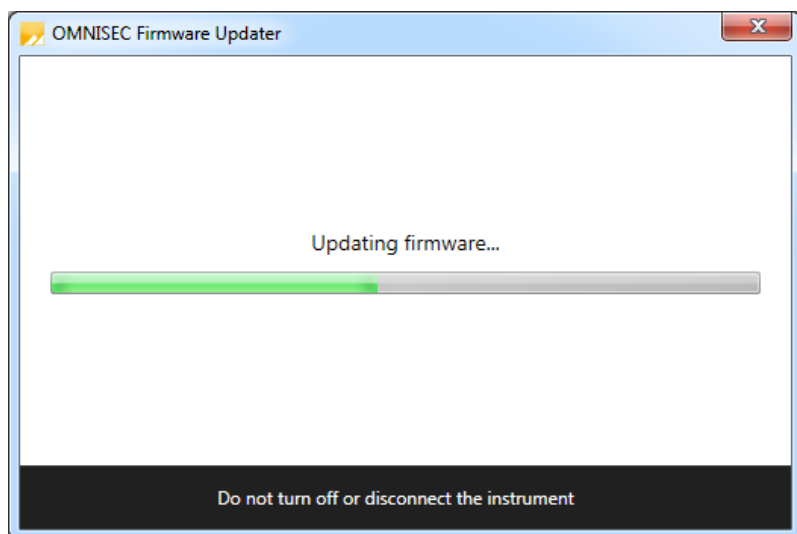


If the OMNISEC Firmware Updater fails to open, or if the updater says it could not detect the instrument, disconnect the instrument, relaunch OMNISEC V11 and reconnect the instrument. You should receive the update prompt to try again.



When the OMNISEC Firmware Updater launches, you should carefully read the information presented to you before continuing.

Click **Continue** to start the update process.



The update process takes several minutes. It is recommended that you do not do anything else on your computer during the update.

After the firmware update has completed, you will be prompted to power cycle the instrument. Once the power up cycle has completed and you see the green lights on the front of RESOLVE and REVEAL click **Exit** and relaunch OMNISEC V11.



Note:

If the update process fails, you don't see two green lights on the instrument or you are still being prompted to update the firmware, try power cycling the instrument and restarting OMNISEC V11 again.

Uninstall Procedure

The software can be uninstalled using the 'Programs and Features' section of the Windows 7 'Control Panel' or the 'Apps' section of Windows 10 'Settings'.

New Features

This release introduces the following new features.

Reference	Issue	Comment
103037	MALS 9 Model/fit view	Support for SEC-MALS 9
84063, 84877, 85086, 85087, 85089, 85090	New reports system and reportable parameters: Mp, Theoretical plate number, Peak width and half height, peak asymmetry, baselines, limits	New reporting feature with additional reportable parameters.
94825	Displaying environmental data	Report the environmental parameters of the system
93893, 94603	Instrument Controls and experiment template browser	User defined instrument and experimental methods can be defined, and sequences run according to them.
94569	Define a new audit trail system at the action level	New audit trail system which reports human readable actions.

Fixed issues

The main issues fixed in this release of the software are listed in Table 3.

Table 3: Bug fixes implemented in OMNISEC 11.00

Reference	Issue	Comment
72746	Pump pressure units and values in Reports does not synchronize with User Preference and Record view grid	Fixed
72904	Non-functional "View Audit Trail" in sample sequence	Fixed
84820	Crash when opening a report created by another user	Fixed
86783	"Save As" report with duplicate title allowed	No longer allowed.
89203	Default Polymer Report in Analysis Data causes crashes	Fixed
89204	Editing reports triggers events in Analysis Data	Fixed
89205	Reports are selectable panels in Analysis Data	Fixed
90442	Renaming report title does not work correctly	Fixed
90999	Sequence Name truncation issues	Fixed
92010	Save As is saving over instead of saving as new file	Fixed
94050	Closing data causes report and new tab to disappear	Fixed
94277	Not all selected injections are being reported in table widgets	Fixed
94425	Fixup of default values for new entities	Fixed
94838	Arbitrary results data not displaying in the sequence information table	Fixed
95426	When user selects "get selection" the application crashes	Fixed
95428	Directory Not Found exception in reporting	Fixed
95586	Delete limits and the application crashes	Fixed
95714	Breaches when (re-)enabling auditing with existing data	Fixed
97211	Chart axes don't work in print (preview)	Fixed
98321	An analysis can be selected in a different injection	Fixed
98329	Error Finding baseline when no data is selected	Fixed
98464	Stored experiment settings template issues	Fixed
98551	Display target values when copying current instrument setup	Fixed
99073	We report column oven temperature instead of detector oven temperature	Fixed. Correct temperatures for the different compartments are reported.

100067	User cannot edit the purge time in instrument setup templates	Fixed
100545	Manually applying limits applies auto baselines.	Fixed
100994	Fatal exception when copying instrument setup	Fixed
101171	Experiment Settings Method prevents acquisition	Fixed
101213	MALS temperature is not stored in the instrument setup method	Fixed
101282	Reporting doesn't update company name or logo	Fixed
101486	Auditing always happens which causes a crash	Fixed
101622	Instrument Settings Method phases don't cancel properly	Fixed
101637	Crash on empty method browsers	Fixed
102006	Crash after stopping acquisition and trying to open one	Fixed
102130	Duplicate instrument setup/experiment settings method names allowed	Fixed
102139	Instrument Setup Methods are not audited correctly	Fixed
102312	Database migration fails where audit trails are missing	Fixed
102423	Stored custom sample info templates are not stored on a restarted experiment	Fixed
102973	Application closes if audit trails not writable	Fixed
102976	Signatures report widget shows locking signatures as non-locking	Fixed
103000	Tolerances are not applied to Quick Run	Fixed
103001	Tolerances are only applied if Setup Methods are selected	Fixed
103037	MALS 9 Model/fit view empty	Fixed
103066	Instrument setup method: Unable to set autosampler loop volume to be set at runtime	Fixed
103074	Setup Template Editors have stopped working	Fixed
103127	View Audit Trail doesn't work on Instrument Setup Method browser	Fixed
103188	Long time to save after an acquisition has finished	Performance improved.
103527	application crashes when editing Calculation Method	Fixed
103540	Reports: Crash on invalid characters in name	Fixed
103555	Locking Signature needs its own permission	Fixed

104204	Instrument Setup Delays are not set to default 60 minutes	Fixed
104365	Plate number calculation N/C	Fixed
104633	Database browser windows audit edited items incorrectly	Fixed
105000	Column configurator crashes application	Fixed
105597	purge time - limit 10 mins	Fixed
105627	Experiment methods/run conditions conflict	Fixed
106367	[Fix] Delete/Create doesn't maintain last Setup Method Version	Fixed
106410	Calculation Method auditing is not working correctly	Fixed
106465	Out of memory crashes when printing charts	Fixed
106581	Calculation method editor view - Update Item audit trail	Fixed
106803	"Set at Runtime" Setup Method dialog has greyed out OK button	Fixed
107370	Application crashes when editing 'Default Method' calculation	Fixed

Known Issues

The following software bugs have been discovered within the software, and will be investigated as part of a future release. Please follow the suggested work-around.

Table 4: Known issues in OMNISEC v11.00 software.

Reference	Issue	Workaround
69481	'Printing' reports to PDF uses wrong default filename [Preexisting]	manually filling in the filename
72077	No ability to manually zoom out on the UV Spectrum Map chart	Use the Zoom Back and Full Zoom Out functions in the Ribbon Bar
72688	Current selection in the Data Selector window is lost when toggling the Exclude Baseline Monitors or Exclude Quick Runs options	No workaround
72866	Find Limits fails where the RI signal is inverted and there is a single negative peak with no positive peaks	Set limits manually
73366	Calculation method not refreshed when save permission is denied through access control file	No workaround
74953	When importing archives with baseline monitors, the imported baseline monitors are displayed even though the Exclude Baseline Monitors option is selected	Deselect, then reselect the Exclude Baseline Monitors option to refresh the list

75977	The top of the MALS Fit Order view can be cut off	Resize the view
75978	The MALS fit order slider remains on the Raw data view after switching from a MALS method to a non-MALS method if MALS Model/Fit View window is active	Do not have the MALS Model/Fit View as an active window
75979	Baseline fit order may be incorrect for the number of set baseline points	Delete the baselines and reset them
75981	Legends in the overlay, distribution and derived data plots display nonsensical Analysis numbers to differentiate between multiple selected analysed records	No workaround
79089	After a daylight savings time transition, the time displayed in report printouts still uses the old time zone	After the beginning or end of daylight savings, restart the software to ensure that the new time offset is used
80723	Full detector configuration/presence is not recorded in the database	No workaround
80765	Derived data plot shows kick in logMw trace in some circumstances	No workaround
80874	Windows 10 Style Fixes	No workaround
82352	Can accidentally perform operations with keyboard when control button is focused	No workaround
82353	Baselines may not appear on the Raw Data chart even though the points are set	Switch to a different record then switch back. If the problem remains, restart the software.
82361	Changing the active light scattering detector in an existing method creates an invalid method before it can be recalibrated	No workaround
84117	HiDPI display settings can lock up app with an infinite layout loop on Analysis charts	
86583	When a user deletes a sequence the samples associated to the deleted sequence is still displayed in database window	No work around
87304	Copy Graph function produces 'fuzzy' graphs	No workaround. Copy from report designer rather than the analysis screen.
87328	Crash when quickly changing between different Themes in the Options window	Do not change the theme when any data is open or being acquired
87330	Crash when another Malvern Panalytical instrument is connected to the same PC as an OMNISEC	Do not connect any other instruments to the PC when an OMNISEC is connected
88565	Database Saving with Search Term Returns to unfiltered view	Clear search terms when adding new items to the database.

88615	Retention volume may fail to calculate on the first sample of a sequence when using a method with manually set detector offsets	No workaround
90230	Limit/baseline changes after license expires causes crash	No work around
91107	Axis numbers extend past chromatogram window when highlighting	No Workaround
91580	Multiple limits with narrow distribution WflogMw zoomed out display	No Workaround
92608	SQL Server 2014 Express installation fails	Cycle the PC power and restart the installation
93246	Deleting a recent sequence does not remove it from the Analyze Data list on the Start Page	No workaround
93281	Performing a Full Zoom Out after turning off Auto-Scaling in acquisition does not refresh the axes properly	No workaround
93283	Default Method does not work on MALS 9	No workaround
93497	Error when last MALS point deselected in Model/Fit View	Have at least 1 data point selected
94446	Status bar icons wrap to a second row	Limit the length of the computer/system name. No workaround
94546	Cannot change solvent in run conditions	No Workaround
96064	User can add unbounded length description in Tools > Database editor dialogs	Limit the length of the database item.
96583	Unnamed sequences in 10.20 database cause migration to fail	No Workaround
96589	Migration from V30 to V31 discards vital validation error information	No workaround
96708	Error occurred plotting the selected data	No workaround
96817	Index out of range error finding limits on bad baseline data	No workaround
96984	Add Baseline Command does not update the baseline	No Workaround
97099	APC-REVEAL calibration shifts viscometer signal when using BSA	Use a monodisperse sample for calibration.
97390	Crash in Record View on startup	No Workaround
97439	Validation Error in Run Conditions when renaming the sequence to the same as the sample name	No Workaround
97446	Calculation Methods utility browser is not being disabled	No Workaround
98007	Delete does not work correctly on Instrument/experiment Setup Methods	The number of times the template is edited is the number of times the user

		have to select delete to get rid of the template.
98011	Instrument setup browser does not support MPA values	No Workaround
98086	Firmware updater version string out of range	No Workaround
98235	Transducer over pressure protection pop-up displayed as soon as the application is opened	No Workaround
98340	Vapor leak pop-up is not being displayed when software is running a baseline	No Workaround
98383	Fix fatal out of memory exception	No Workaround
98433	Minimum pressure alarm triggers during pump prime	Set minimum pressure at 0 during prime.
98614	Right-click baseline point counts as baseline change	No Workaround
99104	User must select set on instrument controls to get the temperatures value	No Workaround
99195	Finding Limits and Baseline Dialog locking Audit Validation	No Workaround
99232	Autosampler loop volume setting does not take effect without restarting the software	Restart the software when volume changes are made.
99380	Modifying the angles used in a MALS method does not update the Method name.	No Workaround
99381	Method in record view drop down menu and in calculation method do not match	No Workaround
99383	Changing the MALS model fit does not update the MALS data report automatically	No Workaround
99384	At the end of a sequence MALS green laser on button does not turn off.	No Workaround
99385	Load Axis not functioning	No Workaround
99670	Light scattering laser turns off when sequence paused for over 1 hour	Don't pause sequences for longer than 1 hour.
99677	Software fatal error when standard parameters adjusted	No Workaround
99766	Software crashes if grid column settings file(s) missing	No Workaround
99980	RALS/LALS channels not used correctly in an analysis	No Workaround
100137	New schedule doesn't stop when errors are raised	No Workaround
100533	When instrument method is applied update Target temperatures	No Workaround
100564	Portion of OMNISEC name cut off	No Workaround
100579	Error when adjusting the sample sequence	No Workaround

100746	Data from baseline monitor acquisition not saved	No Workaround
101098	Not all experiment settings method properties are reportable	No Workaround
101552	Cant adjust sample concentration lower than 0.0xxxxx	No Workaround
101648	Calculation Method - detectors 'active' checkbox gets muddled when sorting	Don't re-sort the method detectors
101956	Baselines being calculated in Get Selection, crash on no selection	No Workaround
101995	When drawing peak limits on chart, the line is not drawn where the mouse is first clicked	No Workaround
102002	Baseline point markers don't show the correct x and y values	No Workaround
102318	Injection Volume set to 100 when stopping Acquisition	No Workaround
102324	Missing audit trails created on database migration	No Workaround
102636	Alarms are not being caught/handled	No Workaround
102999	Non-fatal exception when aborting sequence	No Workaround
103018	Locking Signature 'Lock' Disappears	No Workaround
103398	Failure to save when analyzing an injection stopped by safety event	No Workaround
103588	Signature context menu items do not always respect permissions	No Workaround
104085	Can add sample to a completed sequence without restarting	No Workaround
104258	search in report item selector does not work	Manually select the items that you want in a report.
104346	Application crashes when selecting 'No' to export before delete	No Workaround
104387	Gridlines re-appear after being disabled.	No Workaround
105916	Copying raw data chart from reports gives black boarder	No Workaround
106118	Under pressure alarm not reached in instrument setup template	No Workaround
107349	Experiment settings pane values are not being used when no template is selected	No Workaround
107573	Data Selector - 'From - to' Date is not fetching data correctly	No Workaround
107908	Database upgrade V31 to V33 can fail	No Workaround
108226	Add commas to Molecular weight numbers	No Workaround
108236	Instrument method - default temperatures	No Workaround

108237	Instrument methods - flow rate changes should be to 0.1	No Workaround
108239	Report designer - MALS channels collapse into a sub heading	No Workaround
108252	Experiment Templates - Not displaying the correct template on close and reopen of client	No Workaround

MALVERN PANALYTICAL

Malvern Panalytical Ltd.
Groewood Road, Malvern,
Worcestershire, WR14 1XZ,
United Kingdom

Malvern Panalytical B.V.
Lelyweg 1, 7602 EA Almelo,
The Netherlands

Tel: +44 1684 892456
Fax: +44 1684 892789

Tel: +31 546 534 444
Fax: +31 546 534 598

info@malvernpanalytical.com
www.malvernpanalytical.com

Disclaimer: Although diligent care has been used to ensure that the information in this material is accurate, nothing herein can be construed to imply any representation or warranty as to the accuracy, correctness or completeness of this information and we shall not be liable for errors contained herein or for damages in connection with the use of this material. Malvern Panalytical reserves the right to change the content in this material at any time without notice. Copyright: © 2019 Malvern Panalytical. This publication or any portion thereof may not be copied or transmitted without our express written permission.