



# Software Update Notification

PSS0023-06: Malvern Link v1.38 software



## Abstract

This document details the release of software PSS0023-06. This is version 1.38 of the automation software for the Insitec laser diffraction system. It covers software issues that have been fixed and new features introduced. This information is required to perform a risk analysis to determine if the software should be installed. In this risk analysis the benefits of the new features provided and resolved software issues must be weighed against the risk of new issues that may be introduced to vital areas of the software or possible changes to the results of future analysis. Installation instructions are provided.

## Installation

It is assumed that you have authority to install or update software within your facility. It is also assumed that you have Administrator rights for the system upon which the software is installed, as this is a requirement of the installation process. If you do not have this authority please consult with your I.T. support department before proceeding.

## Minimum System Requirements

The key minimum requirements for running this software are highlighted in the table below:

Feature	Specification
CPU	Pentium IV 2 GHz or Pentium M 1.4 GHz
Memory	1GB or 2GB when using Windows Vista.
Hard Disk Storage	80Gbyte
Additional Storage Media	CD-ROM drive
Display Resolution	1024 x 768
Connectivity	2 RS232 COM port
Operating System	Windows Vista Business or Enterprise Edition™ Windows XP Professional™ with SP2 or higher installed Windows 2000 Professional™ with SP4 or higher installed

Although the software has been tested using Windows 2000™ and Windows Vista Business Edition™, Windows XP Professional™ is the preferred operating system.



### Instrument compatibility

The Malvern Link v1.38 software is compatible with the following model of Insitec

- ITB5xxx and ITT5xxx : Insitec 2000 model
- IDC5xxx : Insitec 2004 model
- ITX5xxx : Insitec X model
- ILC5xxx : Insitec Liquid

ITB	ITT	ITX	IDC	ILC
ITB5121	ITT5121	ITX5121	IDC5111	ILC5112
ITB5122	ITT5123	ITX5123	IDC5113	ILC5212
ITB5123	ITT5221	ITX5131	IDC5121	ILC5312
ITB5221	ITT5223	ITX5133	IDC5123	ILC5412
ITB5222	ITT5321	ITX5221	IDC5131	ILC5612
ITB5321	ITT5323	ITX5223	IDC5133	
ITB5322	ITT5321	ITX5231	IDC5141	
ITB5421	ITT5323	ITX5233	IDC5143	
ITB5422		ITX5321	IDC5211	
		ITX5323	IDC5213	
		ITX5331	IDC5221	
		ITX5333	IDC5223	
		ITX5421	IDC5231	
		ITX5423	IDC5233	
		ITX5431	IDC5241	
		ITX5433	IDC5243	
			IDC5311	
			IDC5313	
			IDC5321	
			IDC5323	
			IDC5331	
			IDC5333	
			IDC5341	
			IDC5343	
			IDC5411	
			IDC5413	
			IDC5421	
			IDC5423	
			IDC5431	
			IDC5433	
			IDC5441	
			IDC5443	

**Note: Malvern Link version 1.36 onwards is not compatible with Insitec 97 models.**



## Installation Instructions

Before installing Malvern Link the following software must be installed:

	Software	Description
1	Hasp USB key driver	iFix™ hardware key driver. The driver is part of CD-ROM in the following folder :  \Tools\iFix Usb key Driver
2	iFix™ Software version 3.5	GE Fanuc Scada™ package
3	RTSizer Software (version 7.11 minimum)	Insittec Software

The Malvern Link software is provided on one auto-loading CD-ROM. Inserting the CD-ROM into a system configured to auto-run a CD will run the installation program automatically. If your system does not support this feature run the **lsetup.exe** program from the root directory of your CD drive.

**Note:** The full installation procedure is described in the following document

*\Technical Doc\ TNML-General Setup Instructions (GM – 20APR2005).pdf.*

## Uninstall Procedure

The Malvern Link software can be uninstalled using the standard **Add/Remove Programs** feature in the Windows 'Control panel'.



## New Features

### Windows Vista™ Support

**Note:**

**In order to be vista compatible you must turn off the Windows U.A.C feature. This is because iFix and RTSizer are not fully compatible with the new Windows directory structure and the new Windows registry database requirement.**

## Fixed Issues

The following Software Change Requests (SCRs) have been implemented in version 1.38 of the Malvern Link software:

SCR Number	Description	Comments
7019	Pressing [Cancel] in the Change Password Configuration should proceed to an auto-logout	Implemented
7020	It should be possible to select the logout user	Implemented
7060	If the option Reset Lot Number After measuring (At-Line configuration) is enabled, The lot number is not saved with the batch result	Fixed
7206	Unable to edit the latest Process variable in edit mode	Fixed
7207	Problem editing the list of report in the valve sequencer editor	Fixed
7208	The Malvern Link Batch Results and the RTSizer Averaging values are not exactly the same	Fixed
7238	Malvern Link should lock a user after three unsuccessful attempts	Implemented
7245	Malvern Link should save the historical password	Implemented
7260	It should be possible to configure the standard password format	Implemented
7261	Unable to start the virtual keyboard when Malvern Link is in operator mode	Fixed
7262	System power failure – Malvern Link may be in an unsafe mode	Implemented
7360	The name Operator and Supervisor should not be fixed.	Implemented
7407	Malvern Link doesn't show the explicit name of the RTSizer PCV	Fixed
7408	An option should disable the Real-Time error reporting during the batch measurement	Implemented

## Deletions

From version 1.36, Malvern Link software doesn't support Insitec 97 models



## Known Issues

If you find an issue with this software which is not listed below, please report it to Malvern instruments via your local representative or directly to the UK helpdesk.

## New features

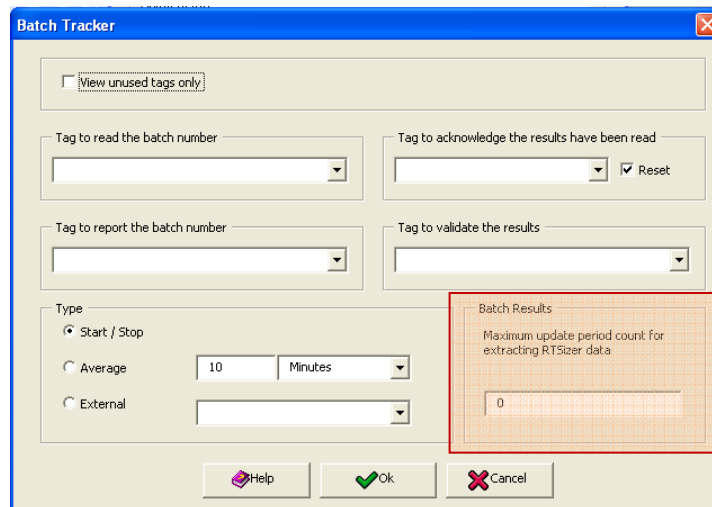
### Malvern Link Batch Result calculation

Until the version 1.37, the batch results provided by Malvern Link and the averaging results provided by RTSizer were slightly different.

Malvern Link performed a weighted average of the individual process variable. RTSizer performed a weighted average of the entire distribution and extracted the individual process variables from the distribution.

In order to be consistent Malvern Link is now able to extract the results directly from RTSizer. However for a Malvern link upgrade it is probably necessary to keep the previous calculation method.

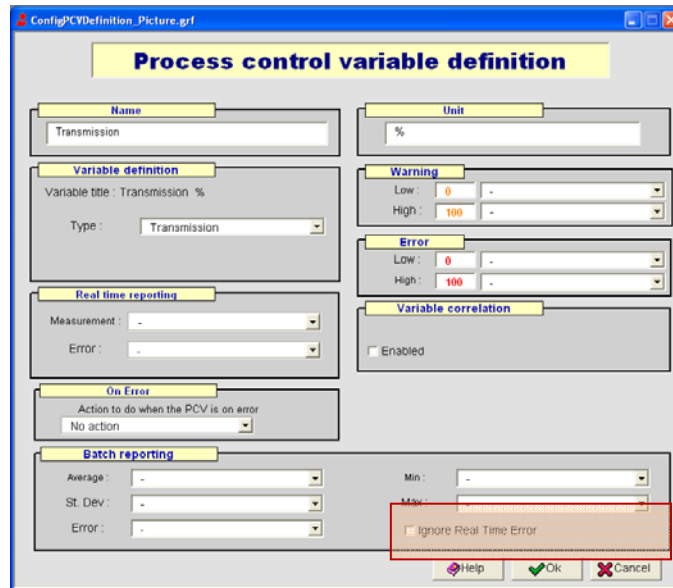
An option has been added to fix the maximum update count authorized for extracting the results from RTSizer. If this number is exceeded, Malvern Link will use the original method for calculating the batch results.





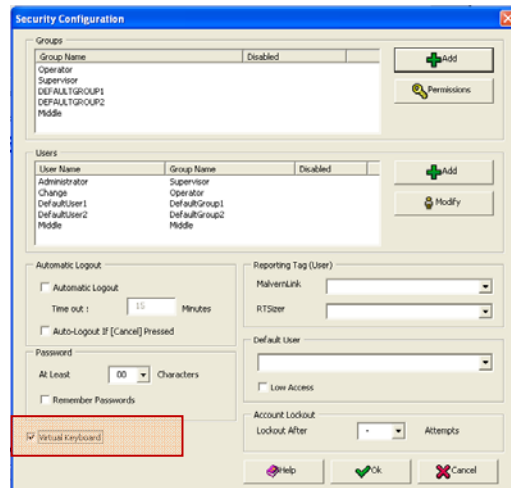
### Process Control Variables error

An option has been added for disabling the real time process control variable error during a batch measurement. The error will be tested at the end of measurement and only on the batch results (average)



### Virtual Keyboard

Installing Malvern Link on a Touch Panel PC may be a problem if the computer is provided a virtual keyboard only. When Malvern Link is logged off the windows keys are disabled it is impossible to start the virtual keyboard for log in. An option has been added for automatically starting the Virtual keyboard when Malvern link is logged off.





### New Security Option

The following options have been added to the security system in order to provide a more robust solution:

1. Control of minimum password length
2. Control of password uniqueness
3. Locking-out user accounts
4. Auto Logout after cancelling the “login” windows

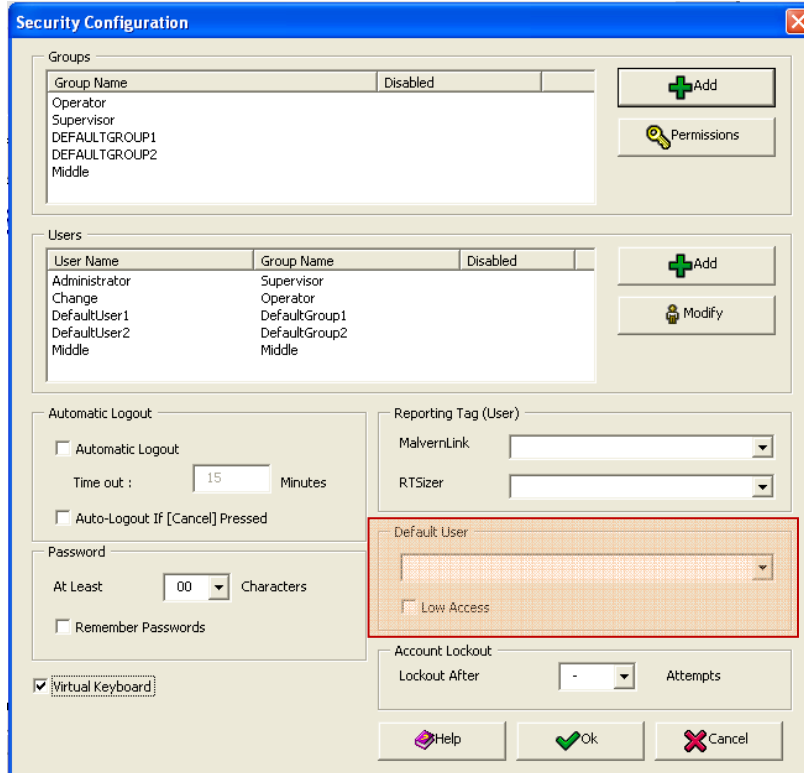
The screenshot shows the 'Security Configuration' dialog box with several sections and annotations:

- Groups:** A table with columns 'Group Name' and 'Disabled'. The 'Disabled' column is checked for all groups. Groups listed: Operator, Supervisor, DEFAULTGROUP1, DEFAULTGROUP2, Middle. Buttons: + Add, Permissions.
- Users:** A table with columns 'User Name', 'Group Name', and 'Disabled'. Buttons: + Add, Modify.
- Automatic Logout:**  Automatic Logout. Time out: [ ] Minutes.  Auto-Logout IF [Cancel] Pressed. Annotation 4 points to this checkbox.
- Password:** At Least [00] Characters.  Remember Passwords. Annotation 1 points to the 'At Least' field.
- Reporting Tag (User):** MalvernLink, RTSizer, Default User. Annotation 2 points to the 'Default User' dropdown.
- Account Lockout:**  Low Access. Lockout After [ ] Attempts. Annotation 3 points to the 'Lockout After' field.
- Virtual Keyboard:**  Virtual Keyboard.
- Buttons: Help, Ok, Cancel.



### Logged off access control

It is now possible to select a specific user account for the logged off access. In addition A “Low Access” option has been added allowing disabling the complete Malvern Link menu when the logged off access is activated.



### Operator and supervisor group

It is now possible to change the standard name and the privileges of the Operator and Supervisor groups.

### Software Update History

The software update notification documents relating to previous versions of the Malvern Link software are available from the support section of the Malvern Instruments website ([www.malvern.com](http://www.malvern.com)). Please refer to these documents for details of the new features released within each version of the Malvern Link software.