

Power-up particle identification with KnowItAll®



Direct export of Raman spectra from Malvern's Morphologi G3-ID to Bio-Rad's KnowItAll® ID Expert platform rapidly identifies unknown particles.



PARTICLE SIZE



PARTICLE SHAPE



CHEMICAL IDENTIFICATION

Key Benefits

- **Reliable:** automatically identify unknown particles
- **Extensive:** database provides 13,000 high-quality spectra of a wide range of compounds
- **Fast:** directly export spectra from Morphologi G3-ID software to Bio-Rad's KnowItAll® ID Expert
- **Insightful:** access physical properties, structures, and other relevant information

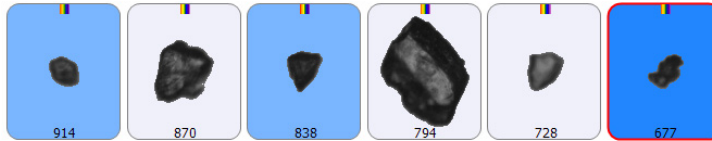
Chemically identifying unknown particles is of great value in a variety of forensic and contaminant applications. One example of this is in the formulation and manufacture of pharmaceutical and biopharmaceutical products, where the presence of inherent, extrinsic or intrinsic particles may affect the efficacy or possibly the safety of a drug.

Direct export of the Raman spectrum of an unknown particle from Malvern's Morphologi G3-ID software to Bio-Rad's KnowItAll® ID Expert, with its extensive chemical database, enhances the information gained by Morphologically-Directed Raman Spectroscopy (MDRS).

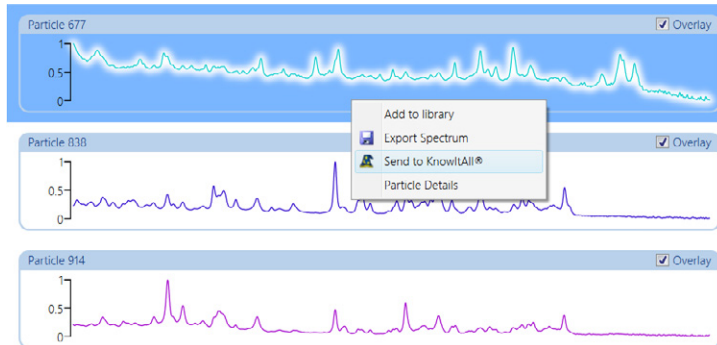


Here's how it works

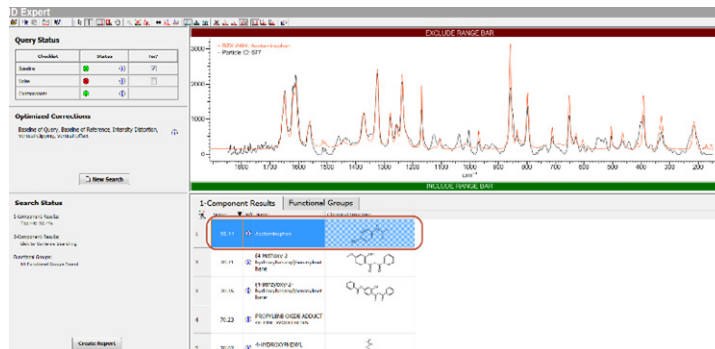
1. Within the Morphologi G3-ID software, select particles of interest and view their spectra



2. Simply right click on any unknown spectrum and export it directly to Bio-Rad's KnowItAll® ID Expert software



3. KnowItAll® opens up automatically, performs a rapid database search against over 13,000 reference Raman spectra and presents initial results
4. Use KnowItAll® to further interrogate the spectrum or print final report



Malvern Instruments Limited
 Grovewood Road, Malvern,
 Worcestershire, UK, WR14 1XZ

Tel +44 1684 892456
 Fax +44 1684 892789

www.malvern.com

Malvern Instruments Worldwide
 Sales and service centers in over
 65 countries; for details visit:
www.malvern.com/contact

© Malvern Instruments Ltd 2015

Malvern Instruments is part of Spectris plc, the Precision Instrumentation and Controls Company.
 Spectris and the Spectris logo are Trade Marks of Spectris plc.



All information supplied within is correct at time of publication.

Malvern Instruments pursues a policy of continual improvement due to technical development. We therefore reserve the right to deviate from information, descriptions, and specifications in this publication without notice. Malvern Instruments shall not be liable for errors contained herein or for incidental or consequential damages in connection with the furnishing, performance or use of this material.

Malvern and the 'hills' logo are International Trade Marks owned by Malvern Instruments Ltd.