

OMNISEC SOFTWARE: v11.21 (PSS0051-12) SOFTWARE UPDATE NOTIFICATION

Introduction

This document details the release of software PSS0051-12: v11.21 of the software for the OMNISEC system. It covers software issues fixed and new features introduced. This information is required to perform a risk analysis to determine if the software should be installed. In this risk analysis the benefits of the new features provided and resolved software issues must be weighed against the risk of new issues that may be introduced to vital areas of the software or possible changes to the results of future analysis. Installation instructions are provided.

Installation

It is assumed that you have authority to install or update software within your facility. It is also assumed that you have Administrator rights for the system upon which the software is installed, as this is a requirement of the installation process. If you do not have this authority please consult with your I.T. support department before proceeding.

Minimum System Requirements

Intel Core i7 processor, 4 GB RAM, 500 GB free hard disk space, 1600 x 900 screen resolution running in 16 bit color mode, CD-ROM drive, 1 free USB port, Windows 7 or 10 64bit Professional operating system.

Recommended System Requirements

The recommended computer system requirements for running this software are highlighted in table 1 below.

Table 1: Recommended system requirements for the OMNISEC software.

Feature	Specification
Processor Type	Intel Core i7 processor (Quad Core HT, 3.1 GHz Turbo, with HD Graphics),
Memory	8 GB RAM
Hard Disk Storage	500 GB free hard disk space,
Additional Storage Media	CD-ROM drive,
Display Resolution	1920 x 1080 full HD screen resolution running in 16 bit color mode,
Connectivity	1 free USB port,
Operating System	Windows 7 or 10 64 bit Professional operating system.

Supported operating systems

OMNISEC software v11 is compatible with Windows 7 or 10. Only 64 bit Professional versions are supported. Windows XP, Windows Vista, and Windows 8 are not supported.

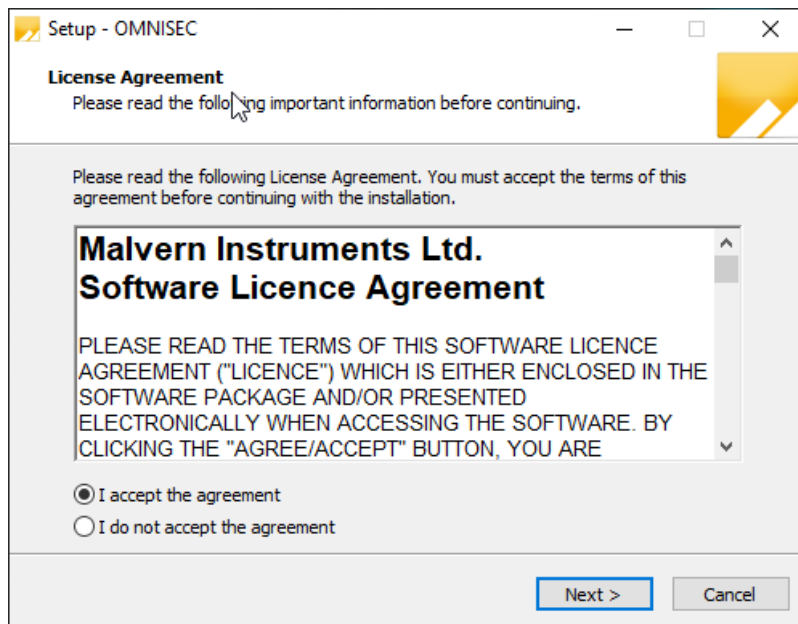
Supported Languages

English

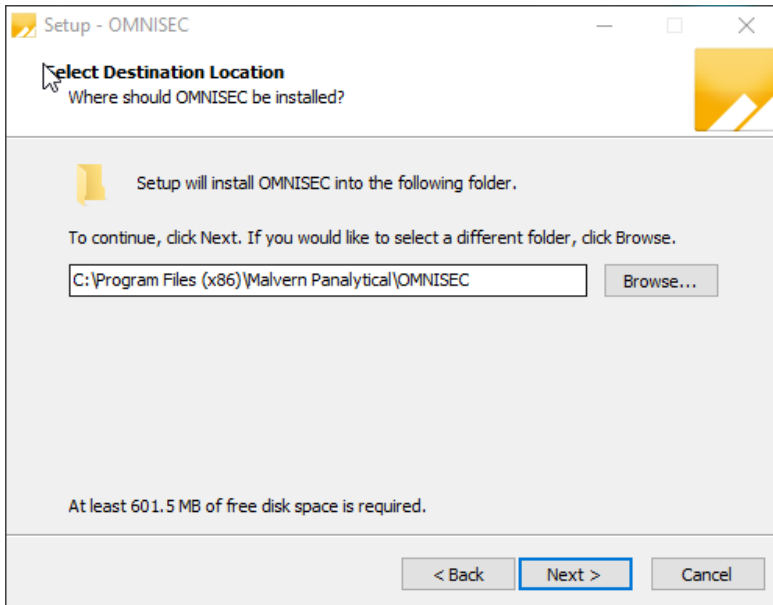
Installation Instructions

Windows 7 or 10 64 bit Professional

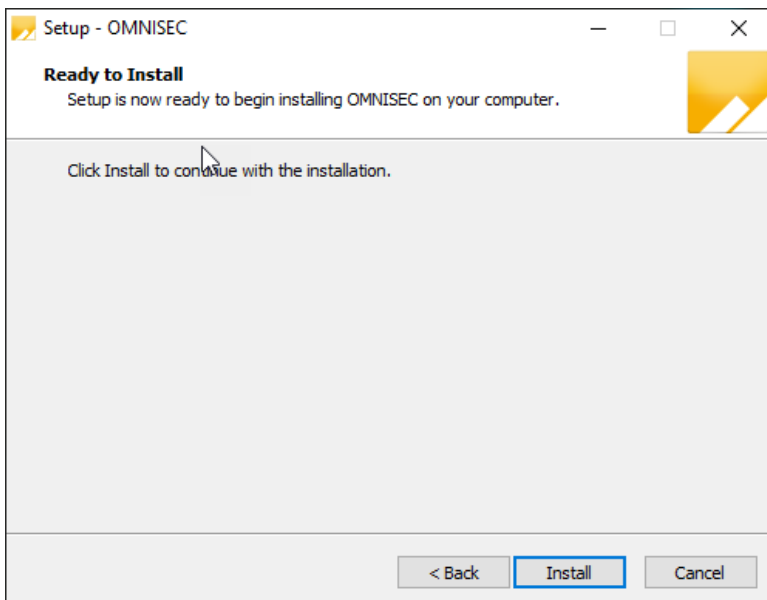
In most cases, OMNISEC should install automatically when the CD is inserted in the drive. If it doesn't, the user can double-click on the installer file, OMNISEC1121.exe, to begin the installation.



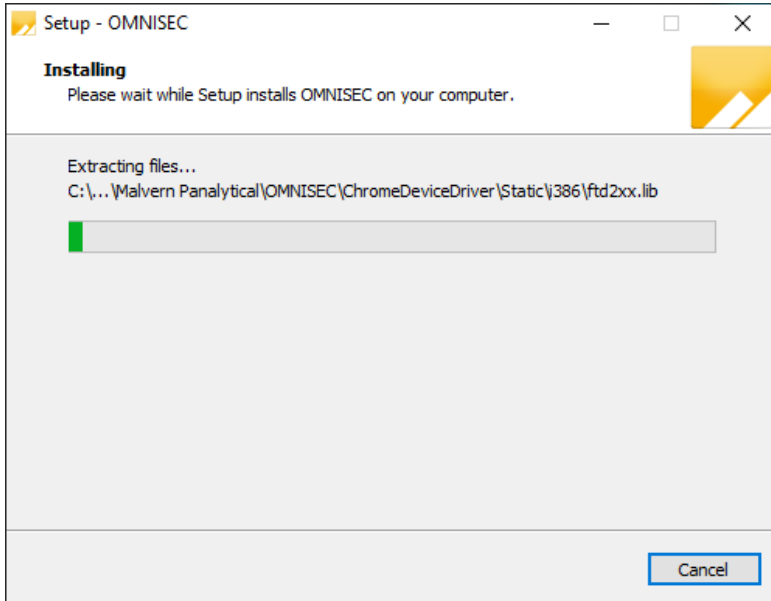
When the license agreement window appears, if you accept the agreement, select **I accept the agreement** and press next. You can select cancel if you would like to stop the setup and continue another time.



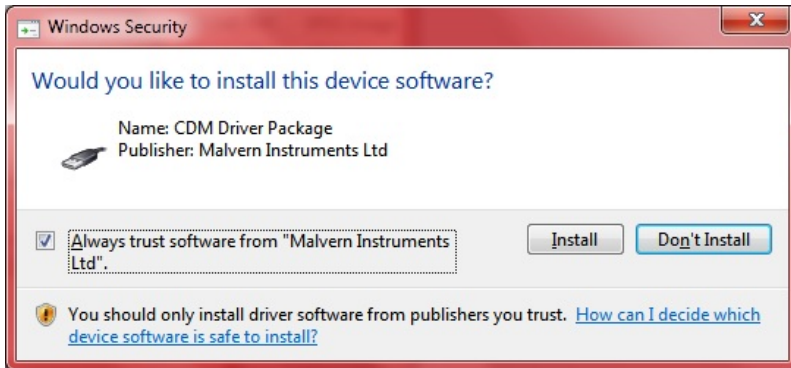
Select the destination location for OMNISEC to install. It is recommended that this remains the default path. Select Next to process.



Once you have followed all of the instructions and clicked "Install", the software will begin the installation process.



If this is the first time OMNISEC v11 is being installed, it will install a 2014 SQL Server instance on Windows 7 and 2019 SQL server on Windows 10. This process may take 10 to 20 minutes to complete.



During the installation, a Windows Security window may appear asking if you would like to install a device. Select "Install" to install the device.



The last section in the Setup window will inform you that the computer needs to be restarted to complete the setup. Once the computer has been fully restarted, OMNISEC v11 will be ready to use.

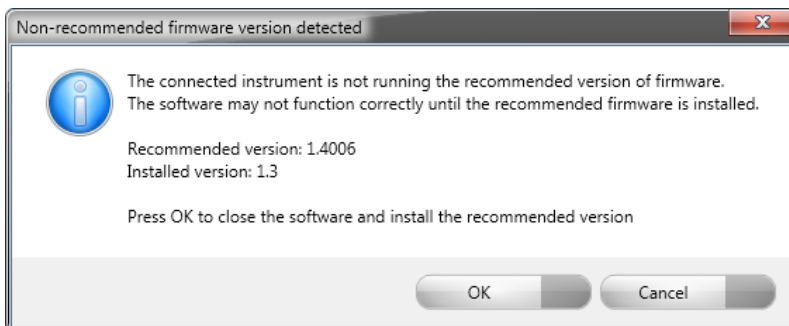
Connecting the OMNISEC to a PC

With the software installed, the instrument should be connected via the USB port, and the system switched on. If present, turn on OMNISEC RESOLVE first and wait 30 seconds for it to complete its startup. Next, turn on OMNISEC REVEAL and wait 1 minute to allow it to complete its startup and connect to OMNISEC RESOLVE. When the two instruments are connected, the light bars on both instruments should be green.

If this is the first time connecting the instrument to the PC, there will be a message that appears saying "Installing device driver software". The names used to identify the drivers will be "CMULx25", "CHROME TAU A" and "CHROME TAU B". Allow the installation to proceed and do not disconnect the instrument from the PC during this process. Once the drivers have been installed, Windows will indicate that they are ready to use.

Updating the OMNISEC REVEAL firmware

The first time you launch OMNISEC v11 with an OMNISEC REVEAL connected, you may be prompted to install a new version of the instrument firmware.



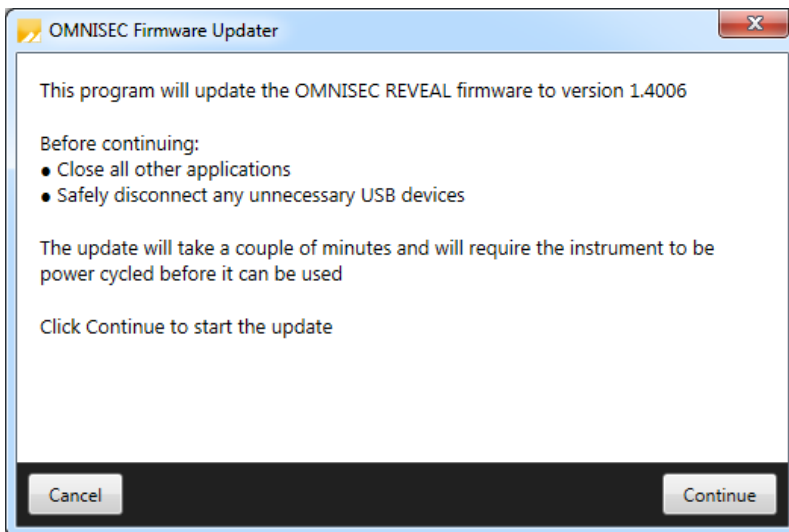
Updating the firmware improves system reliability and compatibility with the version of OMNISEC v11 you have installed on your computer. The update process takes up to 10 minutes and the instrument will need to be power cycled after the update is complete.

Click **OK** to close the OMNISEC application. After a few seconds the OMNISEC Firmware Updater program should automatically launch.

Note:

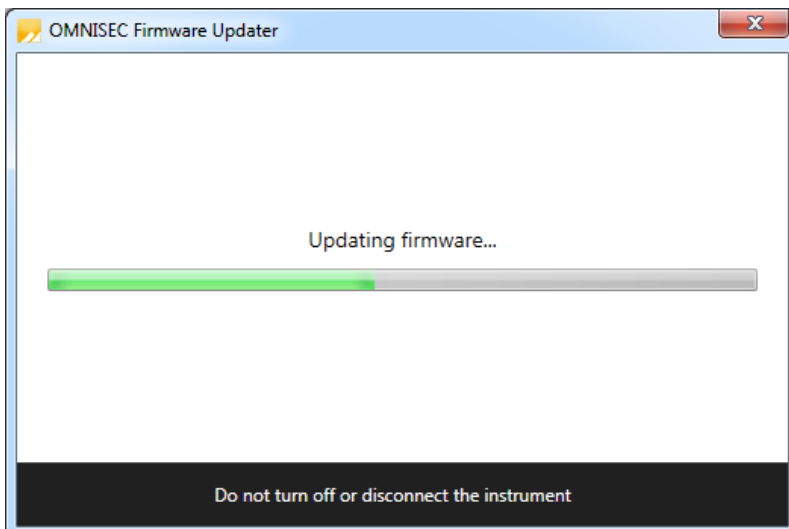


If the OMNISEC Firmware Updater fails to open, or if the updater says it could not detect the instrument, disconnect the instrument, relaunch OMNISEC V11 and reconnect the instrument. You should receive the update prompt to try again.



When the OMNISEC Firmware Updater launches, you should carefully read the information presented to you before continuing.

Click **Continue** to start the update process.



The update process takes several minutes. It is recommended that you do not do anything else on your computer during the update.

After the firmware update has completed, you will be prompted to power cycle the instrument. Once the power up cycle has completed and you see the green lights on the front of RESOLVE and REVEAL click **Exit** and relaunch OMNISEC v11.



Note:

If the update process fails, you don't see two green lights on the instrument or you are still being prompted to update the firmware, try power cycling the instrument and restarting OMNISEC V11 again.

Uninstall Procedure

The software can be uninstalled using the 'Programs and Features' section of the Windows 7 'Control Panel' or the 'Apps' section of Windows 10 'Settings'.

New Features

This release contains no new features.

Fixed issues

The main issues fixed in this release of the software are listed in Table 2.

Table 2: Bug fixes implemented in OMNISEC 11.21

Reference	Issue	Comment
127789	Keep USB 'connected' flag while reconnecting	
127598	Safety events Pause not Stop the acquiring sequence	
127667	Security vulnerability in .omnisecreport files can lead to arbitrary code execution	
113313	pump does not go to standby flow rate when temperature tolerance alarm tripped	
113056	Temperature tolerances are applied during baseline monitor	

Known Issues

The following software bugs have been discovered within the software and will be investigated as part of a future release. Please follow the suggested work-around.

Table 3: Known issues in OMNISEC v11.21 software.

Reference	Issue	Workaround
72077	No ability to manually zoom out on the UV Spectrum Map chart	Use the Zoom Back and Full Zoom Out functions in the Ribbon Bar
73366	Calculation method not refreshed when save permission is denied through access control file	No workaround

75977	The top of the MALS Fit Order view can be cut off	Resize the view
75978	The MALS fit order slider remains on the Raw data view after switching from a MALS method to a non-MALS method if MALS Model/Fit View window is active	Do not have the MALS Model/Fit View as an active window
75981	Legends in the overlay, distribution and derived data plots display nonsensical Analysis numbers to differentiate between multiple selected analysed records	No workaround
76199	UV causing out of memory crashes	No workaround
76528	Fraction collector triggers on baseline monitor activation	When a baseline monitor is run, turn off the fraction collector.
77659	Injection Volume Tooltip "Default" Validation Shown Instead of Mode-Specific-Validation	No workaround
80765	Derived data plot shows kick in logMw trace in some circumstances	No workaround
80874	Windows 10 Style Fixes	No workaround
82353	Baselines may not appear on the Raw Data chart even though the points are set	Switch to a different record then switch back. If the problem remains, restart the software.
87304	Copy Graph function produces 'fuzzy' graphs	No workaround. Copy from report designer rather than the analysis screen.
90230	Limit/baseline changes after license expires causes crash	No work around
91107	Axis numbers extend past chromatogram window when highlighting	No Workaround
92550	Signatures widget name and description	No Workaround
92608	SQL Server 2014 Express installation fails	Cycle the PC power and restart the installation
93028	A failed migration can break audit trails	No workaround
93246	Deleting a recent sequence does not remove it from the Analyze Data list on the Start Page	No workaround
93281	Performing a Full Zoom Out after turning off Auto-Scaling in acquisition does not refresh the axes properly	No workaround
93283	Default Method does not work on MALS 9	No workaround
93497	Error when last MALS point deselected in Model/Fit View	Have at least 1 data point selected
93498	Deselecting all MALS point in Model/Fit View doesn't work	Have at least 1 data point selected
94546	Cannot change solvent in run conditions	No Workaround

96064	User can add unbounded length description in Tools > Database editor dialogs	Limit the length of the database item.
96589	Migration from V30 to V31 discards vital validation error information	No workaround
97099	APC-REVEAL calibration shifts viscometer signal when using BSA	Use a monodisperse sample for calibration.
98011	Instrument setup browser does not support MPA values	No Workaround
98433	Minimum pressure alarm triggers during pump prime	Set minimum pressure at 0 during prime.
98614	Right-click baseline point counts as baseline change	No Workaround
98939	Safety event display is delayed until after a purge	No Workaround
99104	User must select set on instrument controls to get the temperatures value	No Workaround
99144	Detector oven set point at 0	No Workaround
99195	Finding Limits and Baseline Dialog locking Audit Validation	No Workaround
99232	Autosampler loop volume setting does not take effect without restarting the software	Restart the software when volume changes are made.
99380	Modifying the angles used in a MALS method does not update the Method name.	No Workaround
99381	Method in record view drop down menu and in calculation method do not match	No Workaround
99383	Changing the MALS model fit does not update the MALS data report automatically	No Workaround
99385	Load Axis not functioning	No Workaround
99670	Light scattering laser turns off when sequence paused for over 1 hour	Don't pause sequences for longer than 1 hour.
99677	Software fatal error when standard parameters adjusted	No Workaround
99730	Distribution plot - multiple axis appear	No Workaround
99766	Software crashes if grid column settings file(s) missing	No Workaround
99980	RALS/LALS channels not used correctly in an analysis	No Workaround
100533	When instrument method is applied update Target temperatures	No Workaround
100564	Portion of OMNISEC name cut off	No Workaround
100566	Name of pump flow rate incorrect in sequence information table report designer	No Workaround

100746	Data from baseline monitor acquisition not saved	No Workaround
101098	Not all experiment settings method properties are reportable	No Workaround
101552	Cant adjust sample concentration lower than 0.0xxxxx	No Workaround
101648	Calculation Method - detectors 'active' checkbox gets muddled when sorting	Don't re-sort the method detectors
102002	Baseline point markers don't show the correct x and y values	No Workaround
102318	Injection Volume set to 100 when stopping Acquisition	No Workaround
102324	Missing audit trails created on database migration	No Workaround
102636	Alarms are not being caught/handled	No Workaround
102999	Non-fatal exception when aborting sequence	No Workaround
103113	Fatal error while processing - out of memory errors.	No Workaround
103398	Failure to save when analyzing an injection stopped by safety event	No Workaround
103508	derived data view axis changes cause a crash	No Workaround
103588	Signature context menu items do not always respect permissions	No Workaround
104085	Can add sample to a completed sequence without restarting	No Workaround
104258	search in report item selector does not work	Manually select the items that you want in a report.
104285	Print preview does not update when analysis changes	No Workaround
104387	Gridlines re-appear after being disabled.	No Workaround
106118	Under pressure alarm not reached in instrument setup template	No Workaround
106891	User.config file can be corrupted during software shutdown	No Workaround
106893	Corrupted user.config file prevents startup, bypasses global error handler	No Workaround
107573	Data Selector - 'From - to' Date is not fetching data correctly	No Workaround
107907	Access Denied Error when upgrading existing installation	Rename the Audit Trails folder so it is recreated. Audit trails can then be moved back into the new folder post-installation before starting the software.
108236	Instrument method - default temperatures	No Workaround
108237	Instrument methods - flow rate changes should be to 0.1	No Workaround
108239	Report designer - MALS channels collapse into a sub heading	No Workaround

108252	Experiment Templates - Not displaying the correct template on close and reopen of client	No Workaround
108289	y-axis in raw data report widget - display with no dp	No Workaround
108290	top of the peaks cut off in raw data report widget	No Workaround
108291	Raw data view - show processed data - offset and BB taken into account	No Workaround
108619	Import errors can effectively hang the software	No Workaround
108620	axes flashing and non-responsive	No Workaround
109600	Setup Methods: Purge time limit value not being set	No Workaround
109689	dA/dc units in the methods are incorrect	No Workaround
109770	A message box title text is in the wrong resources	No Workaround
109774	Flow rate setup method action doesn't stop on simulated pressure safety event	No Workaround
110709	User prompted to install into the correct folder on upgrade	No Workaround
110910	Investigate - Error when moving limits with multiple analysis selected	No Workaround
111888	Unsaved New Reports can't be Printed or Previewed via Analysis Tab Print/Preview Option	Save the report.
111889	New Reports can't be Printed or Previewed via File>Print/Preview Option	Select another tab and then return to the new report. Print/preview will work.
111949	all report charts show the wrong axis numbers	No Workaround
112410	Notes added in the Sequence have no max character	No Workaround
112820	make column labels consistent in reports	No Workaround
112881	MALS bug	No Workaround
112889	table alignment	No Workaround
112912	Strange extrapolations on the derived plots	No Workaround
112913	Flow rate decimal places	No Workaround
113427	Temperature alarms intermittent	No Workaround
113451	Abandon Changes Error and Fatal Exception	No Workaround
114114	Inconsistent capitalization in Calculation Method Editor page list	No Workaround
114255	Environment tolerance alarm text displayed for non tolerance alarms	No Workaround

114410	"Set at runtime" does not work for delays	No Workaround
114545	Overlay and export goes "Breaky" when use a certain set of data in Build 20191008.8	No Workaround
115017	Methods generation value incorrect	No Workaround
115416	User authentication loop	No Workaround
115443	Export archives can be silently corrupted	No Workaround
115499	Signed on/by columns in Record View do not show signatures	Refer to the Signature widget
115620	Polymer reports crash	No Workaround
115779	First enabled Electronic Signatures can cause an exception	No Workaround
115808	Exporting the currently selected file throws up an Exception Error	No Workaround
115865	Report with same name cancelled causes the selector to incorrectly display	No Workaround
116556	Locked analysis – Column calibration analysis lost if exported to v33 then reimported to v40	Don't export v40 column calibration analysis to pre-v40 database versions
116574	Software fails to start if Reports folder permissions are incorrect	Ensure permissions are correct
117076	Min/Max Pressure alarm changed during sequence Alarm triggers at completion	Do not change the pressure alarm during a sequence
118112	Temperature tolerance - adjust decimal places	No Workaround
118428	Creating a calculation method with limits but no baselines removes limits/adds baselines	No Workaround
118966	REVEAL needs restarting after an overpressure event	No Workaround
118998	Ctrl+right-click add baselines adds baseline(point)s incorrectly	No Workaround
119316	Introduce the "Batch number" to the advanced data selector so that it can be used as a search parameter.	No Workaround
119415	Column header not displayed in reports when duplicate names used	No Workaround
124958	Error plotting (and multiple) MALS Temperature axis	No Workaround
124961	Invalid Raw Data calibration points when switching between column cal method typ961	No Workaround
124963	Select sensible defaults for MALS Temperature axis	No Workaround
129962	Crash when opening injection in paused sequence	Don't open an injection from paused sequence.

MALVERN PANALYTICAL

Malvern Panalytical Ltd.
Groewood Road, Malvern,
Worcestershire, WR14 1XZ,
United Kingdom

Malvern Panalytical B.V.
Lelyweg 1, 7602 EA Almelo,
The Netherlands

Tel: +44 1684 892456
Fax: +44 1684 892789

Tel: +31 546 534 444
Fax: +31 546 534 598

info@malvernpanalytical.com
www.malvernpanalytical.com

Disclaimer: Although diligent care has been used to ensure that the information in this material is accurate, nothing herein can be construed to imply any representation or warranty as to the accuracy, correctness or completeness of this information and we shall not be liable for errors contained herein or for damages in connection with the use of this material. Malvern Panalytical reserves the right to change the content in this material at any time without notice. Copyright: © 2020 Malvern Panalytical. This publication or any portion thereof may not be copied or transmitted without our express written permission.