
Software Update Notification



Filename: Software Update Notification for DTS Oct 1999.doc Doct. Version No: 1
Date: 15th October 1999 Author: A.J. Prior

Dispersion Technology and Light Scattering Products,
(Autosizer, Lo-C, Zetamaster, Zetasizer)

Product	PartNo./Version
PCS for Windows	PSW0001/1.41
MPT-1 Autotitrator	PSW0058/1.00
COR3140 Correlator	PFW0004/2.00



AUTOSIZER



ZETAMASTER



ZETASIZER

Contents

Contents	2
1. Scope	3
2. Summary of changes	3
3. Introduction	3
4. Compatibility	3
5. PCS - Functional Features	5
5.1 Table 1 - Additions	5
5.2 Table 2 - Deletions	5
5.3 Table 3 - Changes	5
5.4 Table 4 - Bug Fixes	5
5.5 Table 5 - Known Bugs	6
5.6 Operational Notes	6
5.6.1 Autotitrator – Model Number ZEM2053 (Mettler DL21)	6
5.6.2 New MPT-1 Autotitrator – Model Number DTS5900.....	6
5.7 Product format.....	6
6. Minimum computer requirements	6
6.1 Operation with computer connected to optics unit	6
6.2 Operation with stand alone computer system	6
7. PCS Software Installation Notes	7
7.1 Installing over a previously installed version.....	7
7.2 Existing data.....	7
7.3 Installation from CD ROM	7
7.4 Installation from floppy disk set	7
7.5 Floppy disk Installation with Windows 3.1, 3.11, Windows95 and Windows98 operating systems.....	7
7.6 Floppy disk installation with WindowsNT 4.0 operating systems.....	8
7.6.1 Re-install WindowsNT service pack 4 (or later).....	8
7.6.2 Checking that the correlator (7132) driver has installed correctly	8
8. Customer deliverables	8
8.1.1 User Manual	8
8.1.2 Application Software.....	8
9. New Autotitrator DTS5900 – MPT-1 Application Software.	8
9.1 MPT-1 Functional Features	8
9.2 Table 1 - Additions	9
9.3 Table 2 - Deletions	9
9.4 Table 3 - Changes	9
9.5 Table 4 - Bug Fixes	9
9.6 Table 5 - Known Bugs	9
9.7 Distribution Media	9
10. MPT-1 Autotitrator Software installation notes	10
10.1 Installation from CD-ROM	10
10.2 Installation from floppy disk set	10
11. COR3140 Firmware upgrade.....	10
11.1 Changes	10
11.2 Installation from CD ROM	10
11.3 Installation from floppy disk set	10
12. Appendix A – Directory Structures	11
12.1 PCS Application Software PSW0001/1.41	11
12.2 MPT-1 Autotitrator Application Software PSW0058/1.00	15

1. Scope

This document is the software update notification for

DTS/PCS software	PSW0001/1.41	(Previously 1.41B1)
MPT-1 Autotitrator software	PSW0058/1.00	(Previously 1.00B1)
COR3140 Correlator firmware	PFW0004/2.0	(Previously 1.99)

v1.41 provides support for the Internal High Power Laser (IHPL) option and the new Autotitrator (DTS5900). The new MPT-1 Autotitrator is ONLY supported on Windows95, Windows98 & WindowsNT operating systems and ONLY with the Zetasizer 1000, 2000 and 3000 series products.

2. Summary of changes

Product	Part no/Ver	Prev ver	Change summary
DTS/PCS software	PSW0001/1.41	1.41B1	7 bug fixes
MPT-1 Autotitrator	PSW0058/1.00	1.0B1	Conductivity titration added Demo/ test TOP added 17 changes
COR3140 Correlator	PFW0004/2.0	1.99	Power-up sequence changed.

See the relevant section for details of these changes.
These products are now released on a single CD-ROM

3. Introduction

A number of changes have been implemented with version 1.41, primarily to support the new Zetasizer 1000 & 3000 IHPL (DTS5103/4 & DTS5303/4). The unit is available as a 50mW (DTS5104, DTS5304) product. This document also contains the release information for the MPT1 autotitrator software v1.00, which is needed for the new autotitrator (DTS5900).

Version 1.41 replaces version 1.40 for systems with MPT-1 autotitrators or for systems with Internal High Power Lasers.

Version 1.41 supports all current DTS/PCS instruments as well as all systems that use the 7032 correlator running under the Windows 3.1, 3.11 and Windows95 operating systems.

4. Compatibility

The WindowsNT version of the DTS/PCS software is compatible with any instrument that uses the 7132 correlator and the Zetamaster and Zetasizer 2000 which both use the 70128 internal correlator.

The WindowsNT version is **not** compatible with **any** instrument using the **7032** correlator. It is also **not** compatible with the PCS7 or PCS8 products.

The new Autotitrator (DTS5900) is **not** supported on **any** of the Microsoft Windows 3.xx operating system platforms.

This release can be run on the following instruments, provided all other requirements are met or exceeded.

Model and Part Number	Product Name and Description	Correlator	Comments
LOC5011	Lo-C, 90 deg. Single angle size	7032 or 7132	see minimum computer requirements 7032 NOT SUPPORTED under WindowsNT
4700PS	Autosizer 4700 Spectrometer with manual goniometer and PCS8	7032 or 7132	see minimum computer requirements NOT SUPPORTED under WindowsNT
PCS5000 (240V, 50Hz) PCS5004 (110V, 60Hz)	Autosizer 4700PS Spectrometer with motorised goniometer, PCS7, PCS8, 7032 CN correlator	7032 or 7132	see minimum computer requirements NOT SUPPORTED under WindowsNT
PCS5001 (240V, 50Hz) PCS5002 (110V, 60Hz)	Autosizer 4700PS Spectrometer with motorised goniometer, PCS7, PCS8, 7032 CE correlator	7032 or 7132	see minimum computer requirements NOT SUPPORTED under WindowsNT
PCS5101 (240V, 50Hz) PCS5102 (110V, 60Hz)	Autosizer 4700 Spectrometer with motorised goniometer, PCS7 and PCS8	7032 or 7132	see minimum computer requirements NOT SUPPORTED under WindowsNT
PCS5201 (240V, 50Hz) PCS5202 (110V, 60Hz)	Autosizer 4700 Spectrometer with motorised goniometer and PCS0078	7132	see minimum computer requirements
ZEM5000	Zetamaster, zeta potential measurement	Internal 70128	see minimum computer requirements
ZEM5002	Zetamaster S, 90 deg. Single angle size and zeta potential measurement	Internal 70128	see minimum computer requirements
ZET5004	Zetasizer 4, multi-angle size and zeta potential measurement	7032 or 7132	see minimum computer requirements 7032 NOT SUPPORTED under WindowsNT
ZET5005	Zetasizer 4S, multi-angle size measurement	7032 or 7132	see minimum computer requirements 7032 NOT SUPPORTED under WindowsNT
DTS5100	Zetasizer 1000, 90 deg. Single angle size	7132	see minimum computer requirements
DTS5101	Zetasizer 1000 HS, 90 deg. Single angle size	7132	see minimum computer requirements
DTS5104	Zetasizer 1000 HS, 90 deg. Single angle size with 532nm laser (50mW)	7132	see minimum computer requirements
DTS5200	Zetasizer 2000, zeta potential measurement	Internal 70128	see minimum computer requirements
DTS5300	Zetasizer 3000, 90 deg. Dual angle size and zeta potential measurement	7132	see minimum computer requirements

DTS5301	Zetasizer 3000 HS, 90 deg. Dual angle size and zeta potential measurement	7132	see minimum computer requirements
DTS5304	Zetasizer 3000 HS, 90 deg. Dual angle size and zeta potential measurement with 532nm laser (50mW)	7132	see minimum computer requirements
DTS5400	Zetasizer 4000, multi-angle size measurement	7132	see minimum computer requirements
DTS5500	Zetasizer 5000, multi-angle size and zeta potential measurement	7132	see minimum computer requirements
DTS5900	Multi Purpose Titrator	7132	see minimum computer requirements NOT SUPPORTED under Windows 3.xx

5. PCS - Functional Features

5.1 Table 1 - Additions

There are no additions.

5.2 Table 2 - Deletions

There are no deletions.

5.3 Table 3 - Changes

There are no changes

5.4 Table 4 - Bug Fixes

The following bug fixes have been carried out in this release of the application software from the previous release 1.41B1

Malvern Software Change Request Number (SCR)	Description	Comments
794	1.41B1 cannot communicate with correlator under WindowsNT	Corrected
822	Go12 doesn't work as the instrument types are not recognised	Corrected
841	If the baseline is not well defined the automatic computation of the baseline is not correct	Corrected
846,862	The printed reports for a Zetasizer 3000 display the use of an attenuator, even though one was not used.	Corrected
860	Corr Prescale does not work	Corrected
861	The settings used by the FFR macro are not reported correctly	Corrected

5.5 Table 5 - Known Bugs

The following is a list of known bugs (to date) in this and previous releases of software. The bug is generic to all versions of applicable DTS/PCS products unless the entry states otherwise.

Malvern Software Change Request Number (SCR)	Description	Comments
	During any one operating session of the Malvern application software, data files can be opened and closed a maximum number of 58 times before an error occurs. This is due to a Microsoft Windows memory limitation in the way files are currently accessed, and has only been reported during internal testing at Malvern. It is unlikely to be a limitation in normal customer use.	Limitation in current version, but extremely unlikely to cause any user problems.

5.6 Operational Notes

5.6.1 Autotitrator – Model Number ZEM2053 (Mettler DL21)

If the software on a system with an autotitrator is being upgraded, a compatible version of titrator software must also be installed. To operate the autotitrator with PSW0001 version 1.41, autotitrator software PSW0008 version 1.56 must be installed. If the software is upgraded using the software upgrade request form, the system configuration details, which will include a Mettler DL21/25 autotitrator, will mean that new autotitrator software will be automatically sent.

5.6.2 New MPT-1 Autotitrator – Model Number DTS5900

The new autotitrator can only be used with Windows95, 98 and NT. The software MPT1 v1.00 must be loaded after installation of the v1.41 DTS/PCS application software.

5.7 Product format

The customer will receive one CD-ROM with the entire DTS product software suite on it. The disk is labelled PSS0001. If required, floppy disk sets can be generated. For details see 'contents.txt' on the CD-ROM.

6. Minimum computer requirements

6.1 Operation with computer connected to optics unit

IBM PC-AT compatible, Pentium 166MHz processor, 32MByte RAM, 30 Mbytes free disk space, one free full length 16 bit ISA type slot, one free RS232C communications port, 3.5" disk drive, CD-ROM drive.

Windows 3.1, 3.11, 95, 98, or NT4 (sp4 or later) installed. 800*600 resolution 256 colour monitor (2 Mbytes video card)

Note:

1. A laptop computer without a free ISA slot is not suitable,
2. Use with a titrator or autosampler requires two free RS232C communication ports

6.2 Operation with stand alone computer system

For data re-analysis, result printing etc., the software can be installed on a stand alone PC. The computer requirements are as above except that an ISA slot and a communications port is not required.

Note: In this case a notebook computer can be used.

7. PCS Software Installation Notes

7.1 Installing over a previously installed version

Before installing the new application software version, it is recommended that if the existing version is installed in the default directory \PCS and \PCS\BMP, then these are copied into a new directory, e.g. \PCSOLD and \PCSOLD\BMP.

This ensures that any customisation of the existing system, saved into the configuration (.ini) files, is preserved. Any changes required can then be made by comparing the new installation with the customised installation in the \PCSOLD directory.

7.2 Existing data

Data in the installation directory will not be affected by the installation procedure.

All data collected using a Windows™ version of PCS/DTS software is compatible with version 1.41 and can be displayed, edited and re-analysed.

7.3 Installation from CD ROM

Follow the instructions in the 'Contents.txt' file on the CD ROM.

7.4 Installation from floppy disk set

To create a floppy disk from CD ROM, follow the instructions in the 'Contents.txt' file on the CD ROM. Then follow the instructions below.

7.5 Floppy disk Installation with Windows 3.1, 3.11, Windows95 and Windows98 operating systems

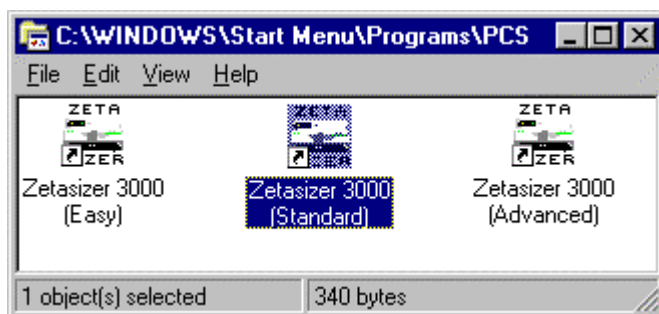
Insert the diskette labelled DTS/PCS v1.41, Disk 1 of 1, for Windows 3.1, 3.11 & Windows95 & Windows98, PSW0001/1.41 Disk 1 of 3 into the A: drive on your computer.

In Windows 3.1, 3.11 type A:\setup into the File Run dialog in program manager and press enter.

In Windows95 & Windows98 type A:\setup into the Run dialog of the start menu and press enter.

Follow the Install wizard selecting the directory and system type as required. Choose the default C:\pcs. Choosing a different directory will require a modification of the Contin.pif file.

The installation should produce three icons in a PCS group, the actual icons installed will depend on the system selected:



The default directory structure produced should be:

C:\PCS	Malvern application software
C:\PCS\BMP	Icon bitmaps

7.6 Floppy disk installation with WindowsNT 4.0 operating systems

The setup program will automatically detect NT systems and install the appropriate driver. You should log on to the Windows NT workstation in Administrator mode.

Note that the uninstall facility cannot remove the driver. The driver may be completely uninstalled by stopping it from the Devices control panel applet, deleting the single driver file correla.sys from the Windows NT System32\Drivers directory, and deleting the registry key HKEY_LOCAL_MACHINE\SYSTEM\CurrentControlSet\Services\Correla using the Registry Editor tool.

7.6.1 Re-install WindowsNT service pack 4 (or later)

Microsoft specify that "if you change or add new software or hardware components to your system after you have installed service pack 4, then you'll need to install service pack 4 again." (See 3.2 Adding New Components to the System, Windows NT4.0 Service Pack 4 Readme.text file.) Since this is what has just been done, you should perform this step now. Re-install your service pack accepting the defaults.

7.6.2 Checking that the correlator (7132) driver has installed correctly

Reboot the computer, and re-log on.

From the Devices control panel applet, check that the driver "correla.sys" is present in the list of resident drivers.

Start the PCS Windows software, and load the correstest.pcm macro.

Run the macro and check that all tests pass.

8. Customer deliverables

8.1.1 User Manual

This comprises two sections, the software reference guide and a Basic user's programming guide. If the software is supplied as part of a complete new system the manual is incorporated as part of the users manual.

8.1.2 Application Software

The software is contained on one CD-ROM. The installed software requires about 3Mbytes of hard disk space.

9. New Autotitrator DTS5900 – MPT-1 Application Software.

This is the release information for the MPT-1 (Multi Purpose Titrator) software, version 1.00. The software is designed to be used in conjunction with DTS/PCS software v1.41B1 or higher, and with an instrument from the Zetasizer 1000, 2000 or 3000 ranges ONLY.

9.1 MPT-1 Functional Features

This software allows the user to measure Zeta Potential, Size and Intensity (or combinations of these) as a function of pH, Conductivity or Additive concentration

Functions are also supplied to calibrate the pH and conductivity measuring systems, prime and flush the hydraulic system, dispense fluids, save measurement records and print measurement reports.

This software is for use with Windows 95, Windows98 or Windows NT4 +sp4 and above only.

This software will not work on Windows 3.1x.

9.2 Table 1 - Additions

Conductivity titration is now supported.
Coffee Mate TOP

9.3 Table 2 - Deletions

Demonstrations Settings TOP

9.4 Table 3 - Changes

SCRs implemented in this release (previous release v1.00b1):

Malvern Software Change Request Number (SCR)	Description	Comments
762	Time out when zero conductivity measured	Implemented
763	No minimum step size exists	Implemented
765	Inclusion of extra parameters in the reports	Implemented
776	Make volume of titrant used at each pH/conductivity point available	Implemented
777	Printing results after measurement	Implemented
778	Save path on report	Implemented
779	Wrong quantity of titrant added in addition titration	Implemented
781	Customising the titrator operation	Implemented
790	Default Zeta acceptance count rate	Implemented
796	Display of pH, conductivity, additive continuously	Implemented
818	German language compatibility	Implemented
819	Expert mode	Implemented
820	Slow titration mode	Implemented
821	Holes in titration curve	Implemented
823	Titration from 7 to 3 doesn't work	Implemented
827	Size measurement time limitations	Implemented
843	Calculation of isoelectric point and plot different	Implemented

9.5 Table 4 - Bug Fixes

None

9.6 Table 5 - Known Bugs

None

9.7 Distribution Media

One CD-ROM

10. MPT-1 Autotitrator Software installation notes

DTS/PCS version 1.41B1 or greater must be installed before this software is installed. This is handled automatically if both PCS and Autotitrator software are selected when installing from CD-ROM.

10.1 Installation from CD-ROM

Follow the instructions in the 'Contents.txt' file on the CD-ROM.

10.2 Installation from floppy disk set

To create a floppy disk from CD ROM, follow the instructions in the 'Contents.txt' file on the CD ROM. Then place disk 1 in the floppy drive and run setup by selecting Run... from the Start Menu and typing "a:\setup" in the box.

Follow the instructions on screen. When confirmation of the path to the PCS software is asked for, this must be the path to PCSv1.41B1 or greater.

11. COR3140 Firmware upgrade.

11.1 Changes


SCRs implemented in this release (previous release v1.99):

Malvern Software Change Request Number (SCR)	Description	Comments
964	Power-up sequence changed to block reference beam.	Implemented

Tests by Malvern Instruments indicate that this is not essential but is good practice. This upgrade should normally be installed on the next service visit but as the procedure is very straightforward customers could perform the upgrade themselves. This upgrade is only required for the 'HS' versions of instrument as detailed in the table below.

DTS5101	Zetasizer 1000 HS, 90 deg. Single angle size
DTS5104	Zetasizer 1000 HS, 90 deg. Single angle size with 532nm laser (50mW)
DTS5301	Zetasizer 3000 HS, 90 deg. Dual angle size and zeta potential measurement
DTS5304	Zetasizer 3000 HS, 90 deg. Dual angle size and zeta potential measurement with 532nm laser (50mW)

11.2 Installation from CD ROM

1. Ensure the Zetasizer is powered-up and connected via the RS-232 cable to the PC.
2. From Explorer or File Manager open the following directory on the CD-ROM:
 \Firmware\v2.00
3. Run the UPDATE.EXE program by double-clicking on it.
4. On the dialog that appears, click on the  button. The firmware update will commence. This takes about 20 minutes.
5. On terminating, you will be prompted by a message box stating that the board has programmed successfully.

11.3 Installation from floppy disk set

To create a floppy disk from CD ROM, copy the contents of the v2.00 folder identified above to a floppy disk. Insert the disk in Drive A: of the system PC and follow the instructions above.

12. Appendix A – Directory Structures

The following is a list of the Malvern Instruments-originated files that should be present following installation. Please note the following points:

- .ini files holding configuration settings are not overwritten and will be dependant on the individual users system.
- Windows system files used by the application are not Malvern Instruments-originated and are not listed here. If other applications are installed after the Malvern Instruments software, Windows system files may be changed. This does not normally affect the operation of Malvern Instruments' software. If this is a concern then access to the PC should be controlled through physical means or by use of Windows NT security.

12.1 PCS Application Software PSW0001/1.41

Directory Structure C:\PCS for Windows 3.1, 3.11, Windows95 and Windows98

```
Directory of \PCS
.           <DIR>           13/10/99  14:21  .
..          <DIR>           13/10/99  14:21  ..
BMP         <DIR>           13/10/99  14:22  BMP
1           PCM             36        17/01/97  15:10  1.PCM
12SIZE     PCM             4,862     08/12/98  10:11  12SIZE.PCM
2           PCM             35        17/01/97  15:10  2.PCM
3           PCM             36        17/01/97  15:10  3.PCM
AQCLEAN    PCM             890       25/09/97  10:35  AQCLEAN.PCM
AUTOINT    PCP             5,846     08/12/98  10:09  AUTOINT.PCP
AUTOSAM    DLL             55,632    08/07/97  10:25  AUTOSAM.DLL
AUTOSIZE   PCP             5,212     08/03/99  13:47  AUTOSIZE.PCP
AUTOSIZE   WMF             3,640     12/03/97  17:04  AUTOSIZE.WMF
CHECKCR    PCM             844       09/04/98   9:56  CHECKCR.PCM
CMEMDSP    EXE             1,779     25/03/96  17:34  CMEMDSP.EXE
CONTIN     EXE            300,466   27/07/93  10:25  CONTIN.EXE
CONTIN     PIF              995       05/02/97  13:20  CONTIN.PIF
CORRLIB    DLL            281,920   13/09/99  13:51  CORRLIB.DLL
CORRTEST   PCM             4,875     27/05/98  12:25  CORRTEST.PCM
CTL3D      DLL            20,272    24/06/93  14:19  CTL3D.DLL
DDELINK    PCM              275       05/12/96  16:28  DDELINK.PCM
DEFAULT    INT             1,134     28/04/94  12:50  DEFAULT.INT
DEFAULT    ZET            67,804    08/12/92  18:40  DEFAULT.ZET
FULLSIZE   PCP             2,841     14/08/98  12:50  FULLSIZE.PCP
FULLZETA   PCP             3,162     08/03/99  13:47  FULLZETA.PCP
GO12       PCM             5,680     31/08/99  12:40  GO12.PCM
HEADER     WMF            12,092    04/08/91  19:50  HEADER.WMF
INTENSTY   PCP             4,997     08/03/99  13:47  INTENSTY.PCP
ISC        HEX            28,234    29/08/96  16:10  ISC.HEX
ISO13321   PCM             4,606     08/03/99  12:02  ISO13321.PCM
ISO13321   PCP             8,113     08/03/99  13:43  ISO13321.PCP
LINEAR     EXE             2,534     17/07/96  22:53  LINEAR.EXE
LOADCAL    PCM             1,432     12/08/97  16:16  LOADCAL.PCM
LOG        EXE            10,506    10/09/96  15:33  LOG.EXE
LOG192     EXE            14,546    11/09/96  11:02  LOG192.EXE
MACRO      HLP            131,170   02/12/97  16:42  MACRO.HLP
MENUS      HLP             97,336    22/09/97  13:48  MENUS.HLP
PCOEX      PCM             889       09/04/98   9:56  PCOEX.PCM
PCS        EXE            793,376   13/09/99  14:43  PCS.EXE
```

*Dispersion Technology and Light Scattering Products (Autosizer, Lo-C, Zetamaster, Zetasizer)
version 1.41 DTS Application Software for use with (English) Microsoft Windows version 3.1,
Windows for Workgroups version 3.11, Windows95, Windows98 and WindowsNT 4.0*

POKEX1	PCM	154	09/04/98	9:56	POKEX1.PCM
POKEX2	PCM	195	09/04/98	9:56	POKEX2.PCM
POKEX3	PCM	220	09/04/98	9:56	POKEX3.PCM
POKEX4	PCM	318	09/04/98	9:56	POKEX4.PCM
POKEX5	PCM	244	09/04/98	9:56	POKEX5.PCM
READCAL	PCM	620	12/08/97	16:16	READCAL.PCM
REPORT	PCP	734	06/02/95	11:49	REPORT.PCP
RS232	PCM	51	05/12/96	16:28	RS232.PCM
SERVICE	EXE	5,697	26/08/96	9:47	SERVICE.EXE
SIMULATE	PCM	43	05/12/96	16:28	SIMULATE.PCM
SIZE	PCP	5,508	17/03/99	17:24	SIZE.PCP
SIZEMODE	PCM	11	05/12/96	16:28	SIZEMODE.PCM
SIZEREPL	PCP	2,144	20/05/94	15:39	SIZEREPL.PCP
STORE	HEX	28,234	17/06/96	10:55	STORE.HEX
TSTMAC	PCM	500	08/01/99	16:57	TSTMAC.PCM
UNINST	ISU	97,040	13/10/99	14:22	Uninst.isu
VALVE	PCM	82	05/12/96	16:28	VALVE.PCM
Z1000	INI	13,355	13/10/99	14:22	Z1000.INI
Z1000C	INI	13,355	13/10/99	14:22	Z1000C.INI
ZETA	PCP	6,454	08/03/99	13:47	ZETA.PCP
ZETAMA	WMF	2,234	22/02/93	15:26	ZETAMA.WMF
ZETAMAS1	PCP	2,728	08/03/99	13:47	ZETAMAS1.PCP
ZETAMODE	PCM	11	05/12/96	16:28	ZETAMODE.PCM
ZETAREPL	PCP	2,696	08/03/99	13:47	ZETAREPL.PCP
ZETASIZE	WMF	3,004	12/03/97	17:03	ZETASIZE.WMF
ZIMMEX	INT	3,536	25/02/97	22:32	ZIMMEX.INT
ZSIZER	INT	1,134	28/04/94	12:50	ZSIZER.INT
ZSIZER	SZ2	15,072	16/09/99	14:29	ZSIZER.SZ2
ZSIZER	ZET	27,738	16/05/94	13:38	ZSIZER.ZET
64 file(s)		2,111,179 bytes			

Directory of \BMP

.	<DIR>		13/10/99	14:22	.
..	<DIR>		13/10/99	14:22	..
CONC	BMP	654	05/12/96	16:28	CONC.BMP
DOCUMENT	BMP	502	05/12/96	16:28	DOCUMENT.BMP
EXIT	BMP	502	05/12/96	16:28	EXIT.BMP
GO	BMP	502	05/12/96	16:28	GO.BMP
GO12	BMP	502	05/12/96	16:28	GO12.BMP
HELP	BMP	502	05/12/96	16:28	HELP.BMP
INSPECT	BMP	502	05/12/96	16:28	INSPECT.BMP
ISO4	BMP	502	05/12/96	16:28	ISO4.BMP
MIX	BMP	502	05/12/96	16:28	MIX.BMP
OPENFIL2	BMP	502	05/12/96	16:28	OPENFIL2.BMP
OPENFILE	BMP	502	05/12/96	16:28	OPENFILE.BMP
PRINT	BMP	502	05/12/96	16:28	PRINT.BMP
SETUP	BMP	502	05/12/96	16:28	SETUP.BMP
SIZEMODE	BMP	1,870	07/11/96	16:44	SIZEMODE.BMP
SPACE	BMP	502	05/12/96	16:28	SPACE.BMP
STOP	BMP	502	05/12/96	16:28	STOP.BMP
STOPLARG	BMP	502	05/12/96	16:28	STOPLARG.BMP
TEMPLATE	BMP	502	05/12/96	16:28	TEMPLATE.BMP
WASH	BMP	502	05/12/96	16:28	WASH.BMP
ZBUTTO10	BMP	502	05/12/96	16:28	ZBUTTO10.BMP
ZETAMODE	BMP	1,870	07/11/96	16:42	ZETAMODE.BMP
ZMLEFT	BMP	502	05/12/96	16:28	ZMLEFT.BMP

ZMRIGHT BMP 502 05/12/96 16:28 ZMRIGHT.BMP
23 file(s) 14,434 bytes

Total files listed:
87 file(s) 2,125,613 bytes

Directory Structure C:\PCS for WindowsNT

```
Directory of \PCS
13/10/99 12:45 <DIR> .
13/10/99 12:45 <DIR> ..
13/10/99 12:45 <DIR> BMP
17/01/97 15:10 36 1.PCM
08/12/98 10:11 4,862 12SIZE.PCM
17/01/97 15:10 35 2.PCM
17/01/97 15:10 36 3.PCM
13/10/99 12:43 15,707 4700.INI
13/10/99 12:43 11,857 4700_C.INI
13/10/99 12:43 11,857 4700_CC.INI
13/10/99 12:43 15,707 4700C.INI
13/10/99 12:43 11,870 4701.INI
13/10/99 12:43 11,870 4701C.INI
25/09/97 10:35 890 AQCLEAN.PCM
08/12/98 10:09 5,846 AUTOINT.PCP
08/07/97 10:25 55,632 AUTOSAM.DLL
08/03/99 13:47 5,212 AUTOSIZE.PCP
12/03/97 17:04 3,640 AUTOSIZE.WMF
05/01/99 14:01 18,972 callcorr.dll
09/04/98 09:56 844 CHECKCR.PCM
25/03/96 17:34 1,779 CMEMDSP.EXE
27/07/93 10:25 300,466 CONTIN.EXE
05/02/97 13:20 995 CONTIN.PIF
27/09/99 10:24 282,080 CORRLIB.DLL
27/05/98 12:25 4,875 CORRTEST.PCM
11/12/98 17:05 28,672 CORRVDD.VDD
24/06/93 14:19 20,272 CTL3D.DLL
05/12/96 16:28 275 DDELINK.PCM
28/04/94 12:50 1,134 DEFAULT.INT
08/12/92 18:40 67,804 DEFAULT.ZET
14/08/98 12:50 2,841 FULLSIZE.PCP
08/03/99 13:47 3,162 FULLZETA.PCP
31/08/99 12:40 5,680 GO12.PCM
04/08/91 19:50 12,092 HEADER.WMF
08/03/99 13:47 4,997 INTENSTY.PCP
29/08/96 16:10 28,234 ISC.HEX
08/03/99 12:02 4,606 ISO13321.PCM
08/03/99 13:43 8,113 ISO13321.PCP
17/07/96 22:53 2,534 LINEAR.EXE
12/08/97 16:16 1,432 LOADCAL.PCM
13/10/99 12:43 11,723 LOC.INI
13/10/99 12:43 11,729 LOC_C.INI
13/10/99 12:43 11,729 LOC_CC.INI
13/10/99 12:43 11,723 LOCC.INI
10/09/96 15:33 10,506 LOG.EXE
11/09/96 11:02 14,546 LOG192.EXE
```

*Dispersion Technology and Light Scattering Products (Autosizer, Lo-C, Zetamaster, Zetasizer)
version 1.41 DTS Application Software for use with (English) Microsoft Windows version 3.1,
Windows for Workgroups version 3.11, Windows95, Windows98 and WindowsNT 4.0*

13/10/99	12:43	11,744	M4700.INI
13/10/99	12:43	11,872	M4700_C.INI
13/10/99	12:43	11,872	M4700_CC.INI
13/10/99	12:43	11,744	M4700C.INI
02/12/97	16:42	131,170	MACRO.HLP
22/09/97	13:48	97,336	MENUS.HLP
09/04/98	09:56	889	PCOEX.PCM
13/09/99	14:43	793,376	PCS.EXE
09/04/98	09:56	154	POKEX1.PCM
09/04/98	09:56	195	POKEX2.PCM
09/04/98	09:56	220	POKEX3.PCM
09/04/98	09:56	318	POKEX4.PCM
09/04/98	09:56	244	POKEX5.PCM
12/08/97	16:16	620	READCAL.PCM
06/02/95	11:49	734	REPORT.PCP
05/12/96	16:28	51	RS232.PCM
26/08/96	09:47	5,697	SERVICE.EXE
05/12/96	16:28	43	SIMULATE.PCM
17/03/99	17:24	5,508	SIZE.PCP
05/12/96	16:28	11	SIZEMODE.PCM
20/05/94	15:39	2,144	SIZEREPL.PCP
17/06/96	10:55	28,234	STORE.HEX
13/10/99	12:45	64	TConfig.pcm
13/10/99	12:45	97	TFlush.pcm
13/10/99	12:45	130	TMeasure.pcm
08/01/99	16:57	500	TSTMAC.PCM
13/10/99	12:43	181,738	Uninst.isu
05/12/96	16:28	82	VALVE.PCM
13/10/99	12:45	14,680	Z1000.INI
13/10/99	12:45	14,680	Z1000C.INI
13/10/99	12:45	14,677	Z1000HP.INI
13/10/99	12:45	14,677	Z1000HPC.INI
13/10/99	12:45	14,680	Z1000HS.INI
13/10/99	12:45	14,680	Z1000HSC.INI
13/10/99	12:45	14,179	Z2000.INI
13/10/99	12:45	14,179	Z2000C.INI
13/10/99	12:45	17,930	Z3000.INI
13/10/99	12:45	17,930	Z3000C.INI
13/10/99	12:45	17,930	Z3000HP.INI
13/10/99	12:45	17,930	Z3000HPC.INI
13/10/99	12:45	17,930	Z3000HS.INI
13/10/99	12:45	17,930	Z3000HSC.INI
13/10/99	12:43	13,560	Z4000.INI
13/10/99	12:43	13,560	Z4000C.INI
13/10/99	12:43	14,713	Z5000.INI
13/10/99	12:43	14,713	Z5000C.INI
13/10/99	12:43	14,349	ZETA.INI
08/03/99	13:47	6,454	ZETA.PCP
13/10/99	12:43	14,349	ZETAC.INI
22/02/93	15:26	2,234	ZETAMA.WMF
08/03/99	13:47	2,728	ZETAMAS1.PCP
05/12/96	16:28	11	ZETAMODE.PCM
08/03/99	13:47	2,696	ZETAREP1.PCP
12/03/97	17:03	3,004	ZETASIZE.WMF
13/10/99	12:43	13,195	ZETASO.INI
13/10/99	12:43	13,195	ZETASOC.INI

*Dispersion Technology and Light Scattering Products (Autosizer, Lo-C, Zetamaster, Zetasizer)
version 1.41 DTS Application Software for use with (English) Microsoft Windows version 3.1,
Windows for Workgroups version 3.11, Windows95, Windows98 and WindowsNT 4.0*

```

25/02/97  22:32                3,536 ZIMMEX.INT
13/10/99  12:43               13,266 ZMSTER.INI
13/10/99  12:43               13,266 ZMSTERC.INI
13/10/99  12:43               15,372 ZMSTERS.INI
13/10/99  12:43               15,372 ZMSTERSC.INI
28/04/94  12:50                1,134 ZSIZER.INT
16/09/99  14:29               15,072 ZSIZER.SZ2
16/05/94  13:38               27,738 ZSIZER.ZET
          110 File(s)         2,783,188 bytes

```

Directory of \BMP

```

13/10/99  12:45          <DIR>      .
13/10/99  12:45          <DIR>      ..
05/12/96  16:28                654 CONC.BMP
05/12/96  16:28                502 DOCUMENT.BMP
05/12/96  16:28                502 EXIT.BMP
09/02/99  15:44                502 Flush.bmp
05/12/96  16:28                502 GO.BMP
09/02/99  17:08                502 Go_MPT1.bmp
05/12/96  16:28                502 GO12.BMP
05/12/96  16:28                502 HELP.BMP
05/12/96  16:28                502 INSPECT.BMP
05/12/96  16:28                502 ISO4.BMP
05/12/96  16:28                502 MIX.BMP
05/12/96  16:28                502 OPENFIL2.BMP
05/12/96  16:28                502 OPENFILE.BMP
05/12/96  16:28                502 PRINT.BMP
05/12/96  16:28                502 SETUP.BMP
07/11/96  16:44               1,870 SIZEMODE.BMP
05/12/96  16:28                502 SPACE.BMP
05/12/96  16:28                502 STOP.BMP
05/12/96  16:28                502 STOPLARG.BMP
05/12/96  16:28                502 TEMPLATE.BMP
09/02/99  15:05                502 Titrator.bmp
05/12/96  16:28                502 WASH.BMP
05/12/96  16:28                502 ZBUTTO10.BMP
07/11/96  16:42               1,870 ZETAMODE.BMP
05/12/96  16:28                502 ZMLEFT.BMP
05/12/96  16:28                502 ZMRIGHT.BMP
          28 File(s)         15,940 bytes

```

Total Files Listed:

138 File(s) 2,799,128 bytes

12.2 MPT-1 Autotitrator Application Software PSW0058/1.00

Directory Structure C:\MPT-1 PCS for, Windows95, Windows98 and WindowsNT.

Directory of \

```

13/10/99  12:45          <DIR>      .
13/10/99  12:45          <DIR>      ..
13/10/99  12:45          <DIR>      BMP
24/06/99  17:09                616 !Default.TOP
02/09/99  17:14                722 autotitrator.CNT

```

*Dispersion Technology and Light Scattering Products (Autosizer, Lo-C, Zetamaster, Zetasizer)
version 1.41 DTS Application Software for use with (English) Microsoft Windows version 3.1,
Windows for Workgroups version 3.11, Windows95, Windows98 and WindowsNT 4.0*

02/09/99	17:14		416,244	AUTOTITRATOR.HLP
16/07/99	14:11		720	Coffee_Mate.TOP
09/08/99	12:01		5,499	Int_titr.pcp
09/08/99	12:01		5,569	Sizetitr.pcp
06/09/99	09:49		909,312	Titrator.exe
13/10/99	12:45		100,555	Uninst.isu
06/08/99	16:10		8,046	Zetatitr.pcp
		12 File(s)	1,447,283	bytes

Directory of \BMP

13/10/99	12:45	<DIR>		.
13/10/99	12:45	<DIR>		..
09/02/99	15:44		502	Flush.bmp
09/02/99	17:08		502	Go_MPT1.bmp
09/02/99	15:05		502	Titrator.bmp
		5 File(s)	1,506	bytes

Total Files Listed:

17 File(s)	1,448,789	bytes
------------	-----------	-------