

# SOFTWARE UPDATE NOTIFICATION (SUN) – OMNISEC SOFTWARE v10.20: PSS0051



**MOLECULAR WEIGHT**



**MOLECULAR SIZE**



**MOLECULAR STRUCTURE**

## Introduction

This document details the installation and known issues with OMNISEC v10.20. This release is a major release to fix a number of critical issues and introduce a number of new features, including an advanced data filter/selector and a new chart of IV Distribution.

## Installation

It is assumed that you have authority to install or update software within your company's SOPs. If you do not have this authority, please consult with your I.T. support department before proceeding.

It is assumed that you have Administrator rights for the computer. This is required by the installation process.

## Minimum System Requirements

Intel multi-core processor, 4 GB RAM, 500 GB free hard disk space, 1600 x 900 screen resolution running in 16 bit color mode, CD-ROM drive, 1 free USB port, Windows 7 Professional operating system.

## Recommended System Requirements

Intel Core i7 processor (Quad Core HT, 3.1 GHz Turbo, with HD Graphics), 8 GB RAM, 500 GB free hard disk space, 1920 x 1080 full HD screen resolution running in 16 bit color mode, CD-ROM drive, 1 free USB port, Windows 7 64 bit Professional operating system.

## Supported operating systems

OMNISEC software v10.20 is compatible with Windows 7. Both the 32 bit and 64 bit versions are supported.

Windows XP, Windows Vista, and Windows 8 and Windows 10 are not supported.

## Supported Languages

English

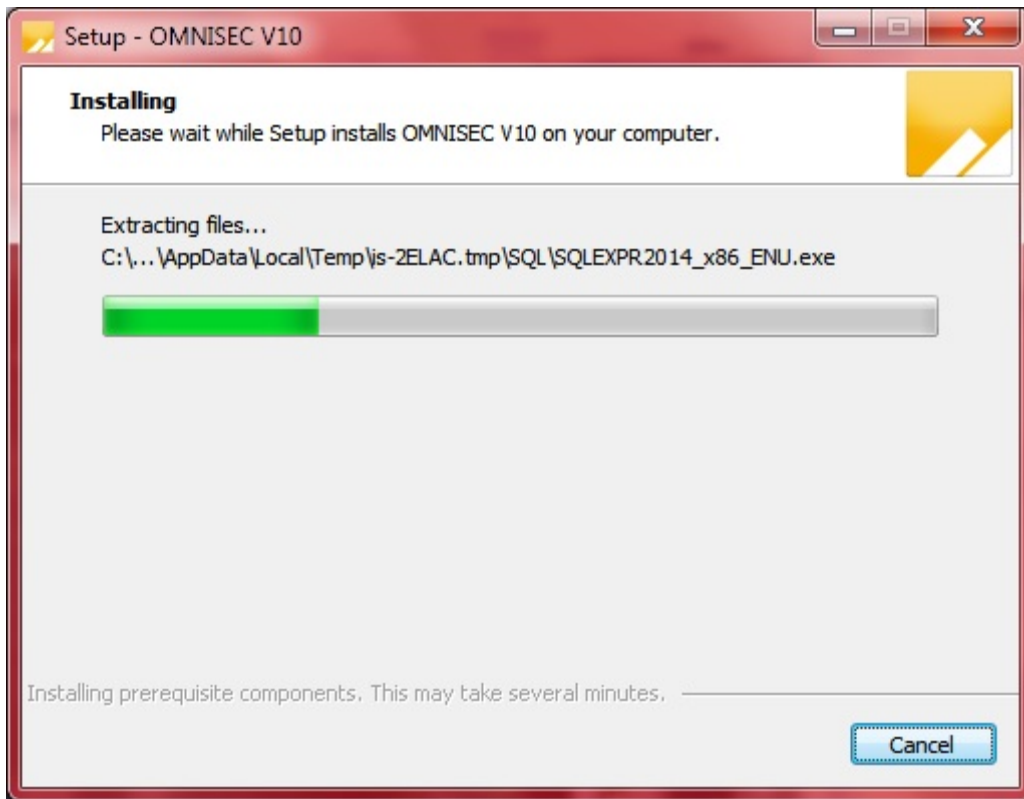
## Installation Instructions

### Windows 7

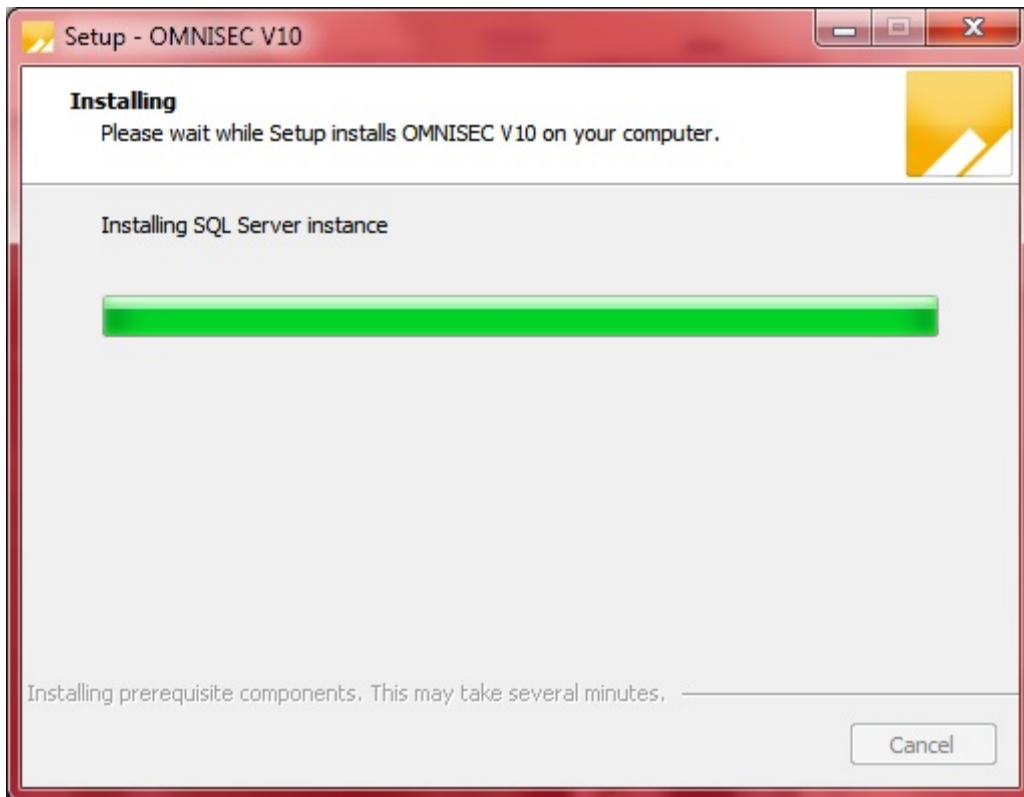
In most cases, OMNISEC should install automatically when the CD is inserted in the drive. If it doesn't, the user can double-click on the installer file, OMNISEC1020.exe, to begin the installation.



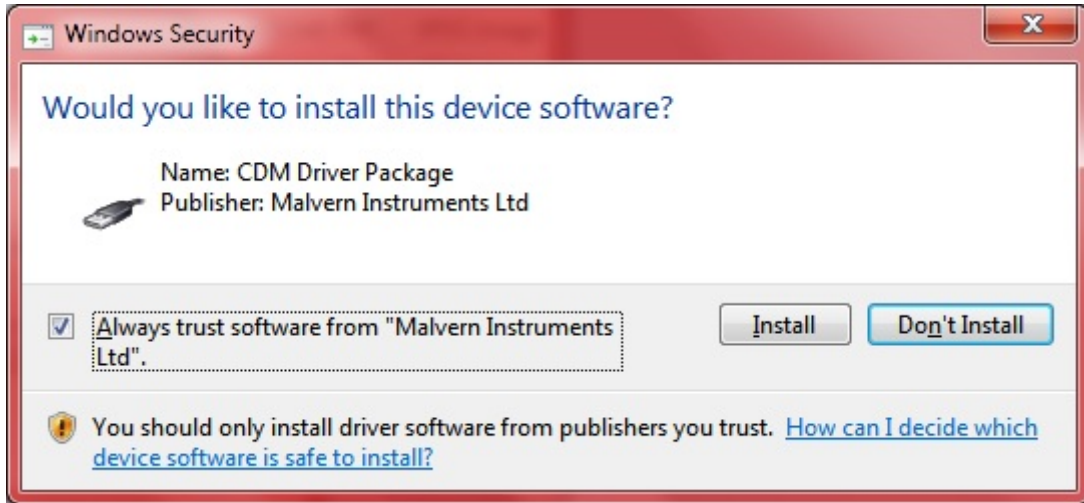
When the Setup window appears, select Next to process. You can select cancel if you would like to stop the setup and continue another time.



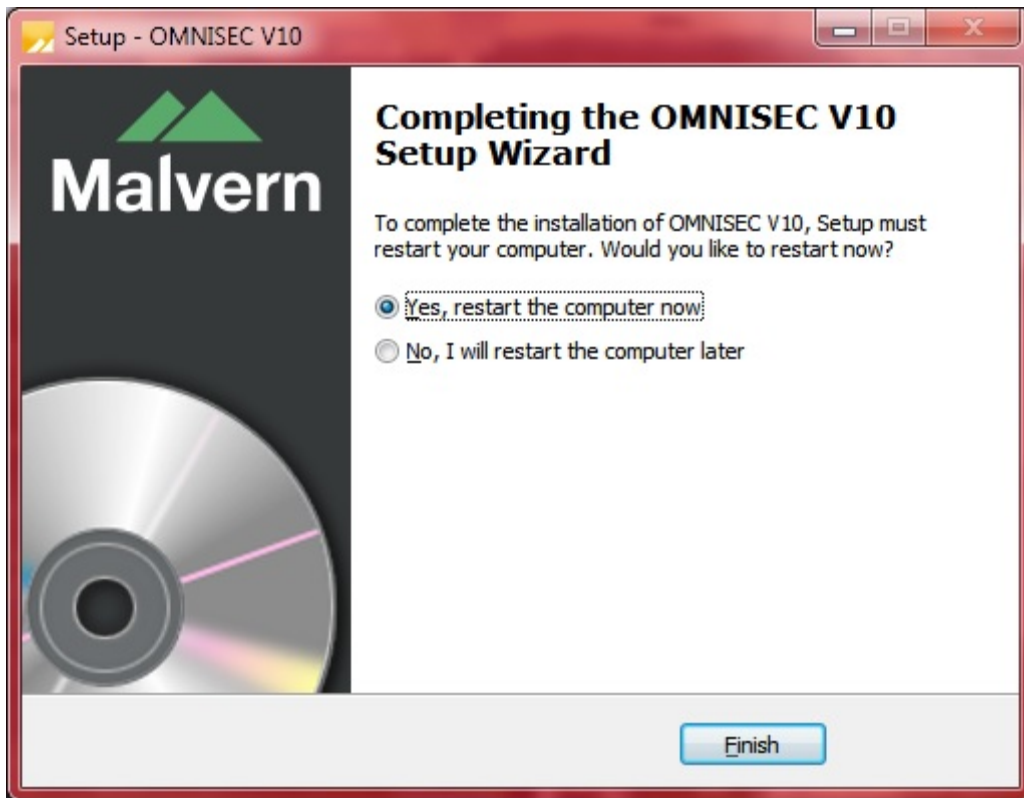
Once you have followed all of the instructions and clicked "Install", the software will begin the installation process.



If this is the first time OMNISEC v10 is being installed, it will install a 2014 SQL Server instance. This process may take 10 to 20 minutes to complete.



During the installation, a Windows Security window may appear asking if you would like to install a device. Select "Install" to install the device.



The last section in the Setup window will inform you that the computer needs to be restarted to complete the setup. Once the computer has been fully restarted, OMNISEC v10 will be ready to use.

## Connecting the OMNISEC to a PC

With the software installed, the instrument should be connected via the USB port, and the system switched on. If present, turn on OMNISEC RESOLVE first and wait 30 seconds for it to complete its startup. Next, turn on OMNISEC REVEAL and wait 1 minute to allow it to complete its startup and connect to OMNISEC RESOLVE. When the two instruments are connected, the light bars on both instruments should be green.

If this is the first time connecting the instrument to the PC, there will be a message that appears saying "Installing device driver software". The names used to identify the drivers will be "CMULx25", "CHROME TAU A" and "CHROME TAU B". Allow the installation to proceed and do not disconnect the instrument from the PC during this process. Once the drivers have been installed, Windows will indicate that they are ready to use.

## Uninstall Procedure

The software can be uninstalled using the 'Programs and Features' section of the Windows 7 'Control Panel'.

## New Features

The new features added to the software are shown in table 1:

**Table 1: New features added to OMNISEC 10.20**

Reference(s)	Feature
<b>40757</b>	Intrinsic viscosity distribution. It is now possible to plot dWF/dLogIV vs Intrinsic viscosity in the new IV Distribution chart
<b>40758, 41121, 41100</b>	Advanced data selector view. The complete database can now be scanned, sorted and selected according to any record view parameter (e.g. sample type, or column set). This can be used to identify all samples sharing a common analysis or run within a certain time period, or sorted according to numerous other parameters.
<b>39644</b>	Additional parameters have been added to the Records View and Sample Info Table in the report pages including: Autosampler temperature, Column oven temperature, Detector temperature, Column set, Pump pressure
<b>40141</b>	It is now possible to manually stop the RI zero and Viscometer zero functions
<b>41088</b>	If using OMNISEC in conjunction with SEC-MALS 20, it is now possible to deactivate the SEC-MALS 20 when not needed
<b>40233</b>	The Measured Concentration of the sample can now be displayed in report pages along with the sample recovery %
<b>40530, 40531, 40539, 40540</b>	Band Broadening corrections have been updated. Use Version 1 for continuity with historical results Use Version 2 for improved corrections

## Fixed issues

The main issues fixed in this release of the software are listed in table 2.

**Table 2: bug fixes implemented in OMNISEC 10.20.**

Reference(s)	Issue	Comment
40794	Pump might automatically prime after clearing a leak error, before confirming that the prime valve was open.	Resolved so that priming will always ask to confirm the release valve is open
40856	Software could not handle commas as decimal markers.	Resolved so that European comma and decimal usage is compatible with the software
40206	Injection volumes are now limited according to injection mode: Full loop is always fixed to 300 µl Partial loop mode may vary between 1 µl and 0.5 x the loop volume Zero waste mode may vary from 1 to 100 µl with the standard needle and injection loop	Fixed to remove ambiguity in options
40266, 39830, 39571, 39910	Multiple database access errors that may cause crashes, during data saving, exporting and importing	Resolved and stability improved
41109	Software would crash if trying to analyze data that did not include MALS data with a method that had been calibrated including MALS data	Software will now calculate available results
41105	Pump pressure was always reported as PSI in the report pages, even when MPa was selected in the options menu	Fixed
41106	Could not type a decimal point in the Max Flow Rate field of the column editor	Fixed
41104	In the Run Conditions report, Solvent Viscosity displayed the Solvent Refractive Index	Fixed
41103	In the Run Conditions report, the Run Length field displayed Flow Rate	Fixed
41104	In the Run Conditions report, the Columns Assigned field displayed the column temperature	Columns Assigned now correctly displays the columns assigned to the run
41122	When running OMNISEC REVEAL as a stand-alone detector, the manually entered flow rate was always recorded as 1 ml/min	Flow rate is now correctly recorded as the user specified value
41148	Method naming is incorrect when using similar named methods	Fixed
41152	Able to set baseline points on IP channel	Fixed
41095	The software could crash after multiple zoom events	Fixed
41097	Opening new data sets while viewing the PDA view could cause a software crash	Fixed

## SOFTWARE UPDATE NOTIFICATION

<b>41123</b>	Editing the sequence while collecting data with a SEC-MALS connected can cause the software to crash	Fixed
<b>41124</b>	Communication issues during instrument startup could cause the software to immediately crash	Fixed
	Automatic baseline selection for the UV channel only worked at 190nm.	Now finds baseline at the wavelength specified in the Calculation Method
	A2 was not being incorporated into instrument calibration	Fixed
<b>41019</b>	Sequence execution dates were always set to the acquisition date of the last injection run in the sequence	Newly acquired sequences will now have the date and time of when the sequence started
<b>40643</b>	Raw View did not display correctly after being re-enabled as an analysis view	Fixed
<b>39350</b>	The Calculation Method Summary compare function was not working	Fixed
<b>39571</b>	If the software was importing data while running and the data acquisition completed, the software could crash	Fixed
<b>41120</b>	Unable to stop an acquisition due to the Stop button being incorrectly disabled	Fixed
<b>41092</b>	Lengthy auto baseline and calibration tasks made the software appear as though it had crashed	Feedback is now provided when these operations are in progress
<b>39623</b>	During a baseline monitor, the retention volume assumed the flow rate was 1mL/min, meaning retention volume may not be displayed correctly.	The retention volume is now correctly based on the flow rate
<b>41142</b>	When selecting multiple injections with the same sample name and injection number but from different sequences or analyses, the legend in the Overlay and Distribution views only displayed one injection	The legend now distinctly shows each selected injection based on Sequence name, Sample name, Injection number and Analysis

## Known Issues

The following software bugs have been discovered within the software, and will be investigated as part of a future release. Please follow the suggested work-around.

**Table 1: Known issues in OMNISEC v10.20 software.**

Reference(s)	Issue	Workaround
40278	Autoscaling does not work as intended	Manually scale the axes and save them using the "Save my axes" command
39602	After extended periods of working with large datasets, the software may run out of memory	Save analyses regularly and restart the software if the problem occurs
39314	The search feature in the columns database only works for column sets, not columns.	Manually search the columns list.
39315	Internet Explorer may block the help file from appearing depending on security settings	Allow Internet Explorer to display blocked content.
39617	After some crashes, the software may not restart	Disconnect the OMNISEC system from the PC and reconnect it. Alternatively, re-install the software. No data will be lost by doing this.
39364	The Help button in the Report Selector does not function	Open the help file from the Start Page or another area.
39446	The Copy button does not work in the Print Preview window	Copy the image directly from the report pages or the charts.
64698	Copy data from Derived chart without IP & DP data causes application to crash	No workaround
39480	It is possible for the Zoom buttons in the ribbon bar to be inappropriately greyed out.	Use the right click menu in the chart you wish to zoom out of.
	When sample type, dn/dc or concentration are updated, it updates this value for all injections in that sample, however, only the currently selected injection is recalculated.	Select other injections for that sample and recalculate and save them to bring all the results up to date. This requirement is noted in the 'Edit Run Conditions' dialog

### Malvern Instruments Ltd

Enigma Business Park • Grovewood Road  
Malvern • Worcestershire • UK • WR14 1XZ

Tel: +44 (0)1684 892456  
Fax: +44 (0)1684 892789

### Malvern Instruments Worldwide

Sales and service centers in over 50 countries  
for details visit [www.malvern.com/contact](http://www.malvern.com/contact)

© Malvern Instruments Ltd 2016

**more information at [www.malvern.com](http://www.malvern.com)**