

Software Update Notification

PSS0023-05: Malvern Link v1.37 software



Abstract

This document details the release of software PSS0023-05. This is version 1.37 of the automation software for the Insitec laser diffraction system. It covers software issues that have been fixed and new features introduced. This information is required to perform a risk analysis to determine if the software should be installed. In this risk analysis the benefits of the new features provided and resolved software issues must be weighed against the risk of new issues that may be introduced to vital areas of the software or possible changes to the results of future analysis. Installation instructions are provided.

Installation

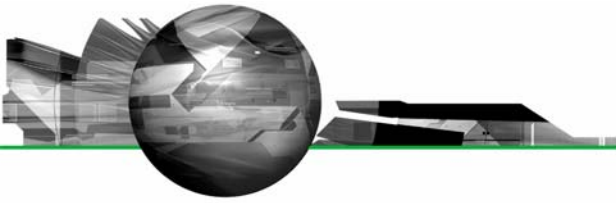
It is assumed that you have authority to install or update software within your facility. It is also assumed that you have Administrator rights for the system upon which the software is installed, as this is a requirement of the installation process. If you do not have this authority please consult with your I.T. support department before proceeding.

Minimum System Requirements

The key minimum requirements for running this software are highlighted in the table below:

Feature	Specification
Memory	512MB and 2GB when using Windows Vista.
Hard Disk Storage	80Gbyte
Additional Storage Media	CD-ROM drive
Display Resolution	1024 x 768
Connectivity	2 RS232 COM port
Operating System	Windows Vista Business or Enterprise Edition™ Windows XP Professional™ with SP2 or higher installed Windows 2000 Professional™ with SP4 or higher installed

Although the software has been tested using Windows 2000™ and Windows Vista Business Edition™, Windows XP Professional™ is the preferred operating system.



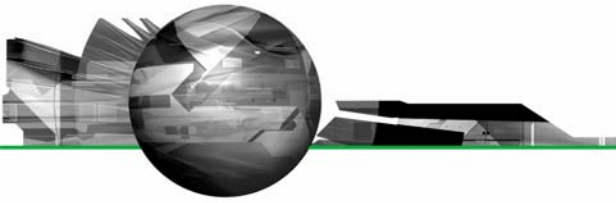
Instrument compatibility

The Malvern Link v1.37 software is compatible with the following model of Insitec

- ITB5xxx and ITT5xxx : Insitec 2000 model
- IDC5xxx : Insitec 2004 model
- ITX5xxx : Insitec X model
- ILC5xxx : Insitec Liquid

ITB	ITT	ITX	IDC	ILC
ITB5121	ITT5121	ITX5121	IDC5111	ILC5112
ITB5122	ITT5123	ITX5123	IDC5113	ILC5212
ITB5123	ITT5221	ITX5131	IDC5121	ILC5312
ITB5221	ITT5223	ITX5133	IDC5123	ILC5412
ITB5222	ITT5321	ITX5221	IDC5131	ILC5612
ITB5321	ITT5323	ITX5223	IDC5133	
ITB5322	ITT5321	ITX5231	IDC5141	
ITB5421	ITT5323	ITX5233	IDC5143	
ITB5422		ITX5321	IDC5211	
		ITX5323	IDC5213	
		ITX5331	IDC5221	
		ITX5333	IDC5223	
		ITX5421	IDC5231	
		ITX5423	IDC5233	
		ITX5431	IDC5241	
		ITX5433	IDC5243	
			IDC5311	
			IDC5313	
			IDC5321	
			IDC5323	
			IDC5331	
			IDC5333	
			IDC5341	
			IDC5343	
			IDC5411	
			IDC5413	
			IDC5421	
			IDC5423	
			IDC5431	
			IDC5433	
			IDC5441	
			IDC5443	

Note: Malvern Link version 1.36 onwards is not compatible with Insitec 97 models.



Installation Instructions

Before installing Malvern Link the following software must be installed:

Software	Description
1 Hasp USB key driver	iFix™ hardware key driver. The driver is part of CD-ROM in the following folder : \Tools\iFix Usb key Driver
2 iFix™ Software version 3.5	GE Fanuc Scada™ package
3 RTSizer Software (version 7.11 minimum)	Insittec Software

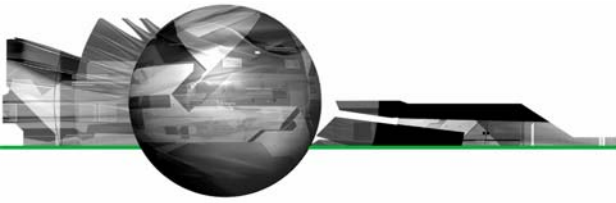
The Malvern Link software is provided on one auto-loading CD-ROM. Inserting the CD-ROM into a system configured to auto-run a CD will run the installation program automatically. If your system does not support this feature run the **lsetup.exe** program from the root directory of your CD drive.

Note: The full installation procedure is described in the following document

\Technical Doc\ TNML-General Setup Instructions (GM – 20APR2005).pdf.

Uninstall Procedure

The Malvern Link software can be uninstalled using the standard **Add/Remove Programs** feature in the Windows 'Control panel'.



New Features

Windows Vista™ Support

Note:

In order to be vista compatible you must turn off the Windows U.A.C feature. This is because iFix and RTSizer are not fully compatible with the new Windows directory structure and the new Windows registry database requirement.

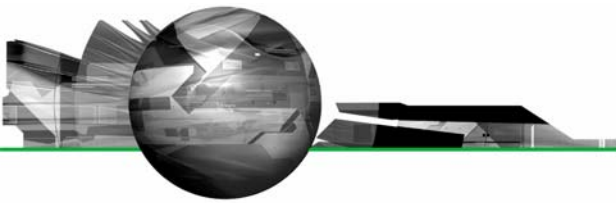
Fixed Issues

The following Software Change Requests (SCRs) have been implemented in version 1.37 of the Malvern Link software:

SCR Number	Description	Comments
6579	Malvern link should not prompt for saving the configuration when it closes. It should be automatic	Implemented
6605	Sometimes Malvern Link and RTSizer crash, specially for liquid applications when an auto-dilution is required	Fixed
6637	Malvern Link should have an option to allow the creation of a measurement file according to a lot number	Implemented
6641	For a dry system, it is not possible to start the advanced programs from the valve sequencer	Fixed
6644	Malvern Link should have a Multi-Line option.	Implemented
6682	Malvern Link should have an option to put the system in a safe state after stopping the scheduler.	Fixed
6744	Compatibility issue with RTSizer 7.20	Fixed
6745	After a scheduler timeout error, the valve sequencer should be stopped automatically	Fixed
6754	Malvern Link should have an option to change the measurement file name according to a Tag value	Implemented
6758	The auto-logout option generates an error if the RTSizer security is enabled	Fixed
6759	Any Malvern Link user should have the permission to change his RTSizer password	Fixed
6779	After loosing the PLC communication or after clearing the alarms, Malvern Link should refresh the tag values	Fixed

Deletions

From version 1.36, Malvern Link software doesn't support Insitac 97 models



Known Issues

If you find an issue with this software which is not listed below, please report it to Malvern instruments via your local representative or directly to the UK helpdesk.

Multi-Line options

The multi-line option requires Malvern Instruments to develop a specific user interface to reflect the customer's actual requirement. Please contact Malvern for further information

Measurement file name

If the path specified for the measurement file doesn't exist, Malvern Link will use the default RTSizer measurement path by default.

New features

New DCS Reporting options (from Malvern Link 1.36)

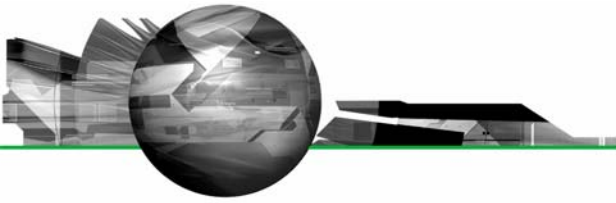
Analogue Output :
Update period
counter.

Digital Output : Valve
sequencer status
(1 = Running)

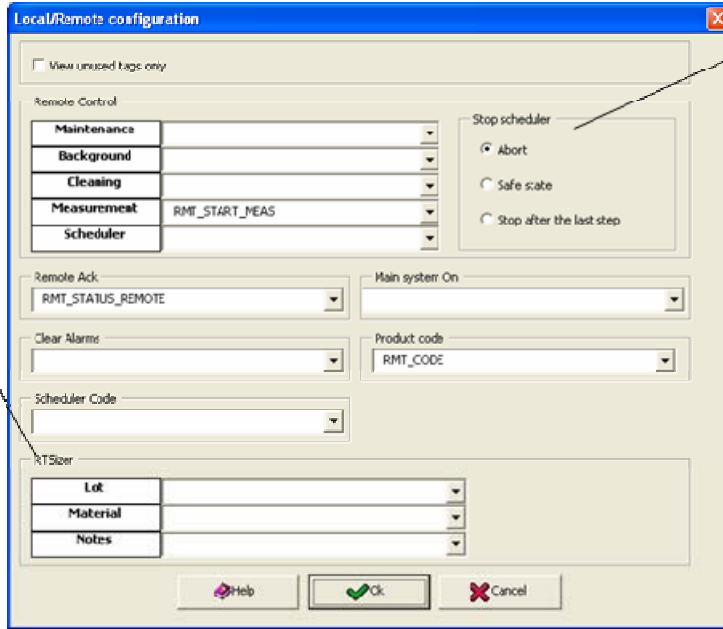
Digital Output :
Scheduler status
(1 = Running)

Analogue Output :
Current active
scheduler code

Analogue Output :
Current active
product code



New Local/Remote options

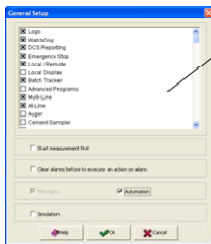
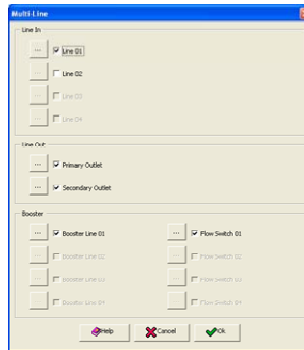


Option for stopping the scheduler remotely

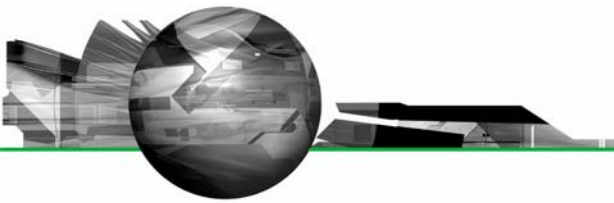
Text tag allowing changing sample documentation

New Multi-Line option

- ▶ Up to 4 lines including:
 - Line Inlet
 - Line Booster
 - Line Booster flow switch
- ▶ Up to two additional outlets

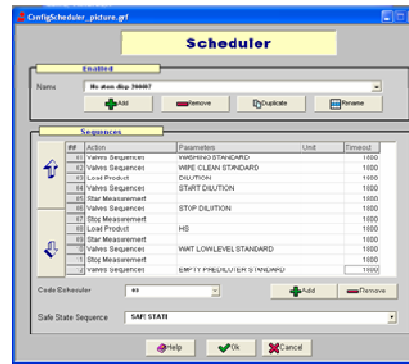
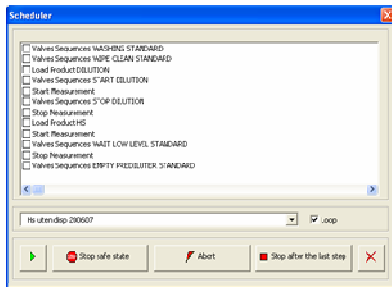


Required a customer Mimic (MPS2136)



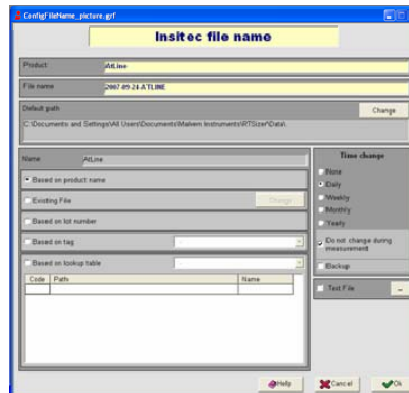
New Scheduler option

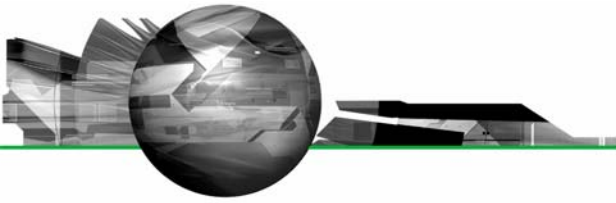
- ▶ Abort the scheduler
 - Stop immediately
- ▶ Stop after the last step
 - Stop the scheduler after the last step
- ▶ Safe state
 - Stop the scheduler immediately and execute a valve sequence setting up the system in a safe state.



New file measurement name options

- ▶ New options to create a measurement file name according to :
 - A text tag value
 - The lot number
 - A lookup table linked to an analogue input
- ▶ New option to not change the file name during measurement





RTSizer password modification

RTSizer password
modification

The screenshot shows a 'Change password' dialog box with the following fields and buttons:

- User Name: MyUser
- Password: [Empty]
- Password confirmation: [Empty]
- RTSizer Security section:
 - User Name: [Empty]
 - Password: [Empty]
- Buttons: Help, Ok, Cancel

Software Update History

The software update notification documents relating to previous versions of the Malvern Link software are available from the support section of the Malvern Instruments website (www.malvern.com). Please refer to these documents for details of the new features released within each version of the Malvern Link software.